

# Wireless Configuration Instructions Windows Mac OSX

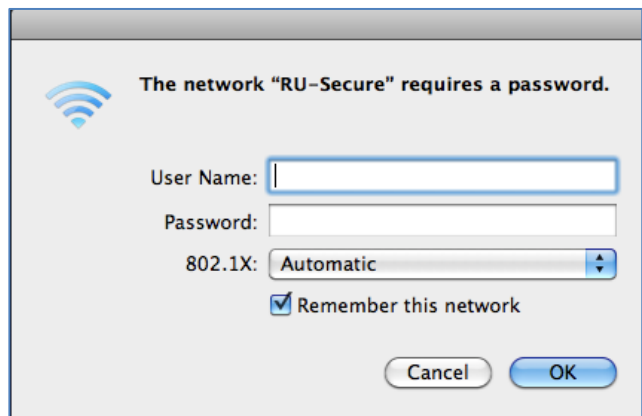
These instructions will configure your wireless connection to the **RU-Secure** wireless network. It will allow you to authenticate and browse using a higher level of security and protection.

## Instruction

## Diagram

### Configure Wireless Connection

1. Click on AirPort to see a list of available networks. Click **RU-Secure** network to connect.
  
2. When prompted **The network “RU-Secure” requires a password**, type in your username and password:
  - a. **Students/Faculty**: Use your **my.ryerson** credentials
  - b. **Staff**: Use your **CFAPS** credentials
3. Click **OK**.



**Instruction**

**Diagram**

4. From the **Verify Certificate** window, ensure that the certificate is for the **RU-Secure** network and that it is authenticating to \*.ryerson.ca .
5. Click **Continue**.



6. If you are prompted to enter your administrative password, enter it and click **OK**, to apply the certificate.



You will now be connected to the **RU-Secure** wireless network. Your credentials are now cached and you will automatically be authenticated when you are within range of the wireless signal.

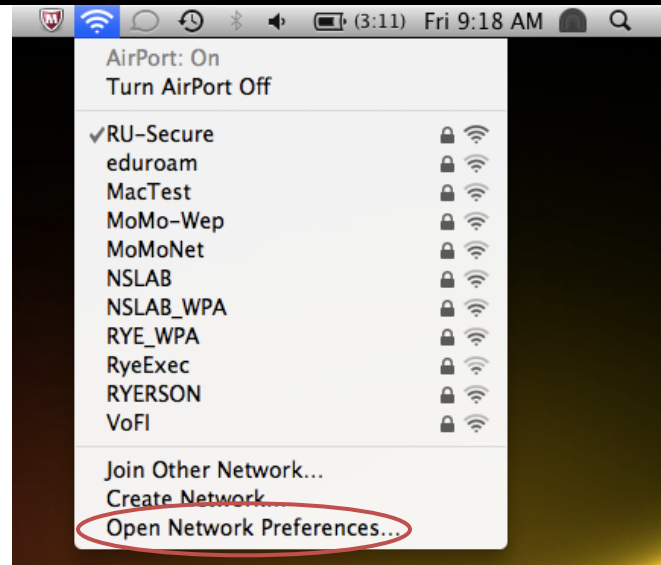
**\*\*\*PLEASE NOTE\*\*\*:** For security reasons we recommend that you **do NOT cache your credentials**. This is especially important for laptops that will have multiple users.  
**Please follow the remaining steps to disable this feature.**

**Instruction**

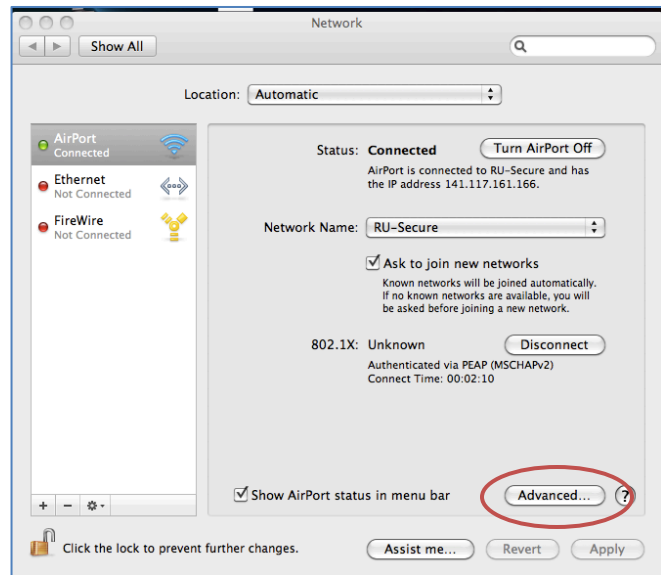
**Diagram**

**Disable Cached Credentials**

1. Click on AirPort and then click **Open Network Preferences.**



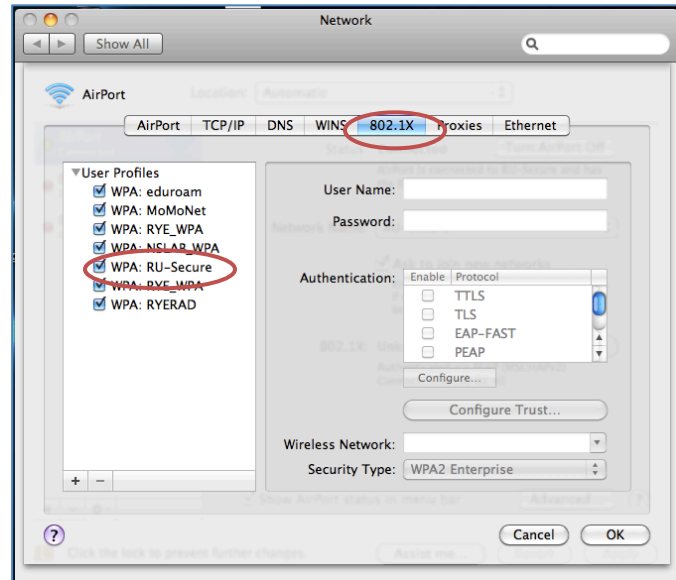
2. From the **Network** preferences window click **Advanced.**



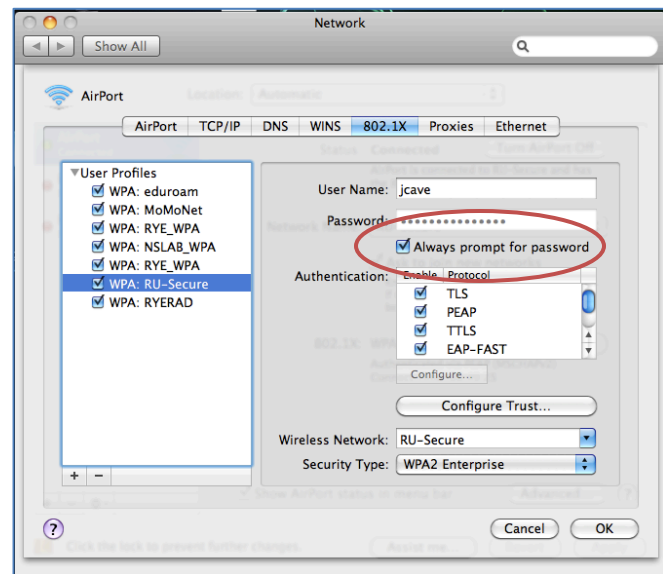
**Instruction**

**Diagram**

3. From the **Advanced Network** window, click the **802.1x** tab.
4. For **Users Profiles**, click **RU-Secure**.



5. Selecting **RU-Secure** displays your username and password on the right side of the screen. Make sure the **Always prompt for password** box is **CHECKED**.



You will be connected to the wireless network and your credentials are no longer cached. You will be prompted each time you wish to log onto the wireless network.