

# Wireless Configuration Instructions Windows Vista

These instructions will configure your wireless connection to the **RU-Secure** wireless network. It will allow you to authenticate and browse using a higher level of security and protection.

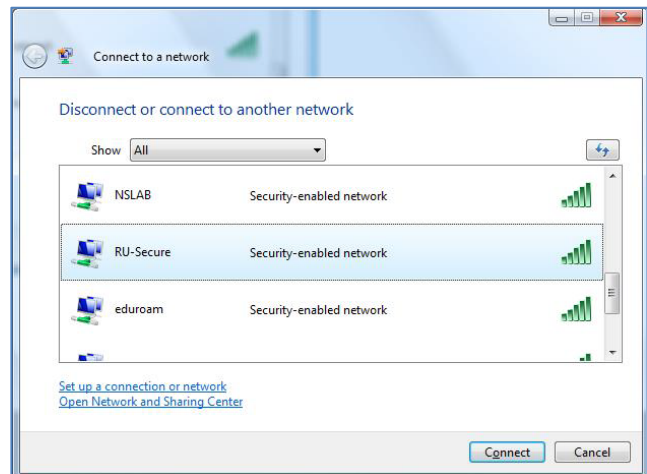
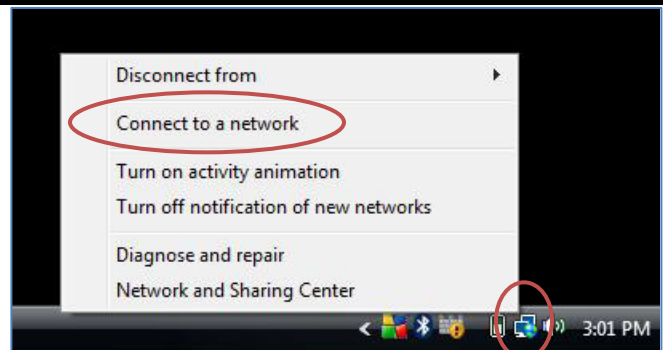
**NOTE:** These instructions will assume you have the latest Windows updates and are using Windows to manage your wireless connection and not a 3<sup>rd</sup> party vendor's program (Intel etc).

## Instruction

## Diagram

### Configure Wireless Connection

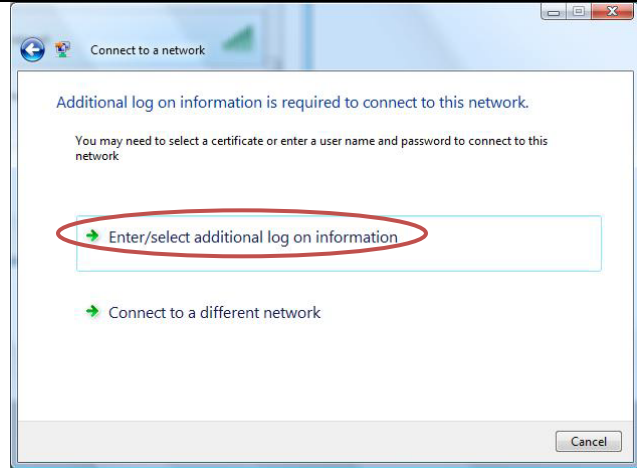
1. From the taskbar, at the bottom right of your desktop, right click the wireless icon.
2. Select **Connect to a network**.
3. Select the **RU-Secure** network and click **Connect**.



**Instruction**

**Diagram**

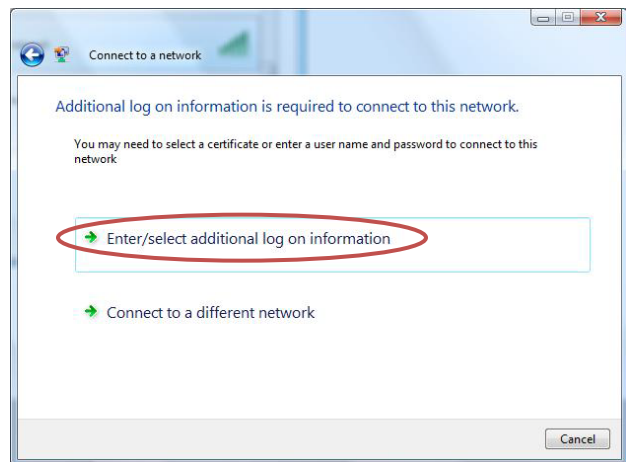
4. From the **Connect to a network – Additional log on information ...** window, click **Enter/select additional log on information** to continue.



5. On the **Enter Credentials** window, type in your username and password:
  - a. **Students/Faculty:** Use your **my.ryerson** credentials
  - b. **Staff:** Use your **CFAPS** credentials
6. Leave the **Logon domain** blank. Click **OK**.



7. The **Connect to a network** window is displayed again, click **Enter/select additional log on information** to continue.

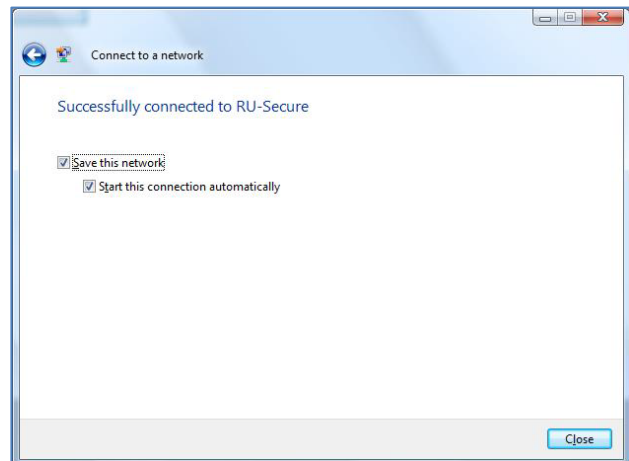


**Instruction**

- From the **Validate Server Certificate** window, click **OK**.

**Diagram**

- After a few moments, a **Successfully connected to RU-Secure** message is displayed.
- Ensure that the **Save the network** checkbox is checked. And click **Close**.



You will now be connected to the **RU-Secure** wireless network. Your credentials are now cached and you will automatically be authenticated when you are within range of the wireless signal.

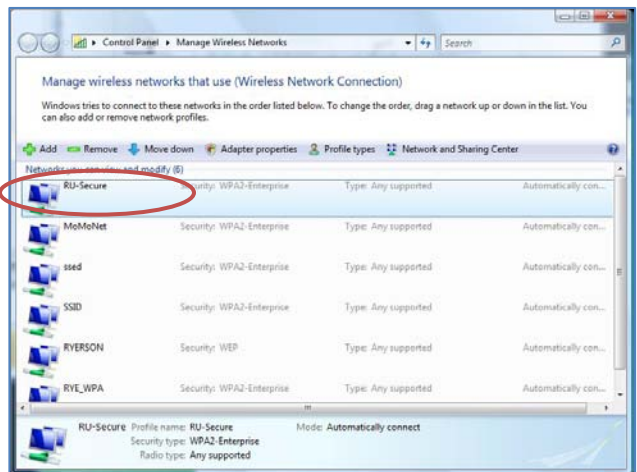
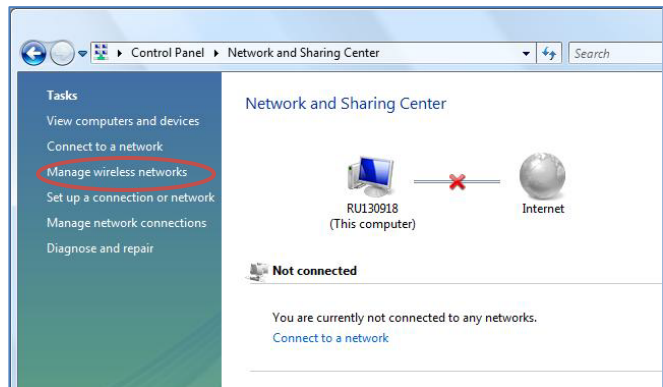
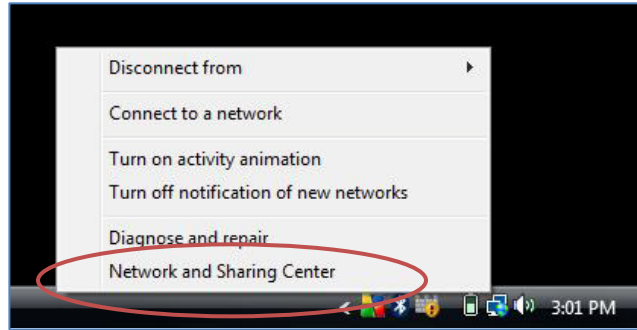
**\*\*\*PLEASE NOTE\*\*\*:** For security reasons we recommend that you **do NOT cache your credentials**. This is especially important for laptops that will have multiple users.  
**Please follow the remaining steps to disable this feature.**

**Instruction**

**Diagram**

**Disable Cached Credentials**

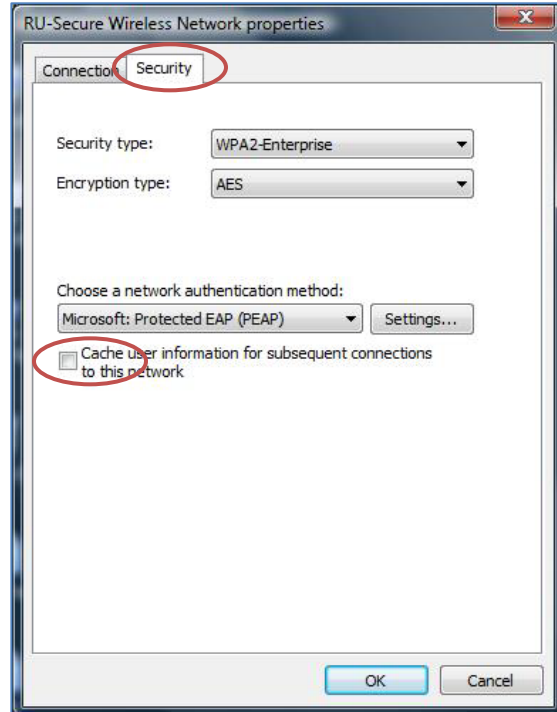
1. From the taskbar, at the bottom right of your screen, **RIGHT** click on the wireless icon and select **Network and Sharing Center**
2. From the **Network and Sharing Center** window, click **Manage wireless networks**.
3. Double click on the **RU-Secure** network.



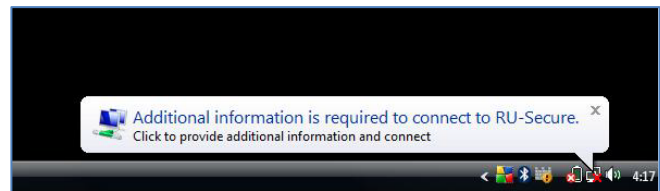
**Instruction**

**Diagram**

4. From the **RU-Secure Wireless Network properties** screen, select the **Security** tab.
5. Uncheck **Cache user information ...** and click **OK**.



6. You will be prompted to login again since a change has been made to the wireless option. Click the **Additional information is required to connect RU-Secure** prompt from the taskbar to login to the **RU-Secure** network.
7. The **Enter Credentials** window is displayed again. Login as you did before. Click **OK**.



You will be connected to the wireless network and your credentials are no longer cached. You will be prompted each time you wish to log onto the wireless network.

