

Wireless Configuration Instructions for Windows 7

These instructions will configure your wireless connection to the **RU-Secure** wireless network. It will allow you to authenticate and browse using a higher level of security.

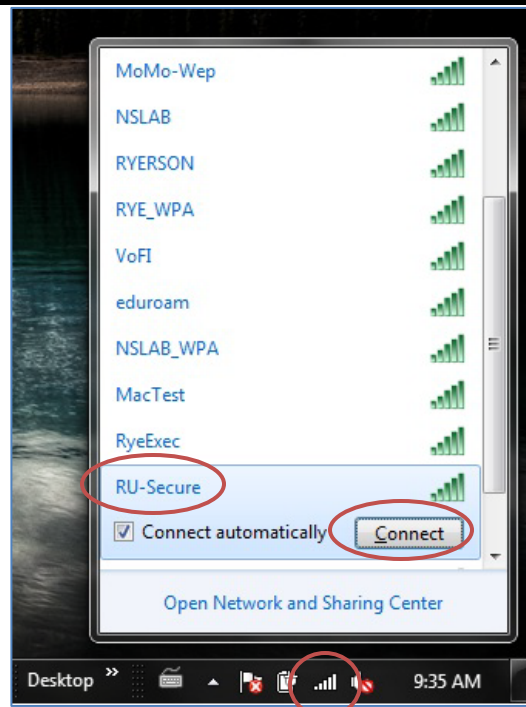
NOTE: These instructions will assume you have the latest Windows updates and are using Windows to manage your wireless connection and not a 3rd party vendor's program (Intel, Linksys etc).

Instruction

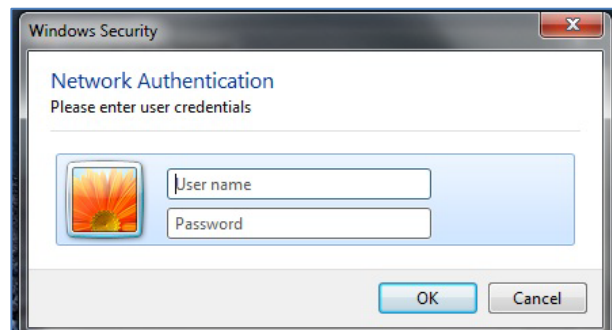
Diagram

Configure Wireless Connection

1. At the bottom right of your screen, on the taskbar, click on your wireless icon.
2. Select the **RU-Secure** network and click **Connect**.



3. From the **Windows Security** screen, type in your my.ryerson username and password and click **OK**.
 - a. **Students/Faculty:** Use your **my.ryerson** credentials
 - b. **Staff:** Use your **CFAPS** credentials



Instruction

Diagram

4. A warning screen will appear to inform you that the connection could not be completed. This is the certificate which needs to be accepted. To verify the certificate information click the **Details** arrow.



5. In the **Details** section make sure that the following items:
 - a. Radius Server: **rad.ns.ryerson.ca**
 - b. Root CA: **Entrust.net Secure Server Certification Authority**
6. Click **Connect**:



7. If you are prompted to select a location to save your network connection, select **Work** network.

You will now be connected to the **RU-Secure** wireless network. Your credentials are now cached and you will automatically be authenticated when you are within the range of the wireless signal.

*****PLEASE NOTE***:** For security reasons we recommend that you **do NOT cache your credentials**. This is especially important for laptops that will have multiple users. **Please follow the remaining steps to disable this feature.**

Instruction

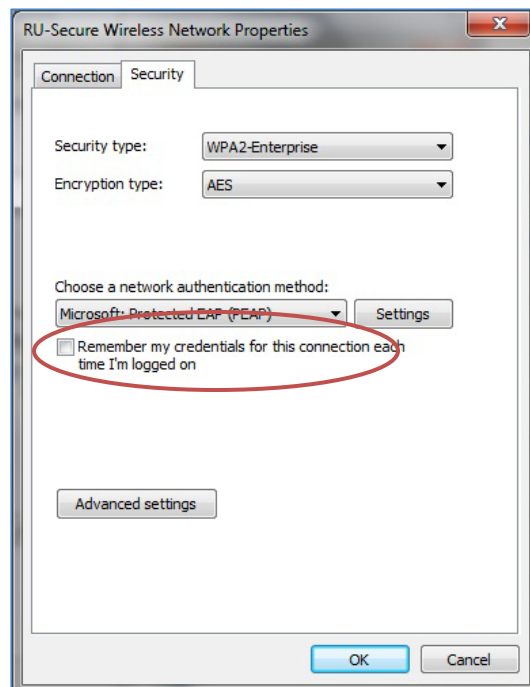
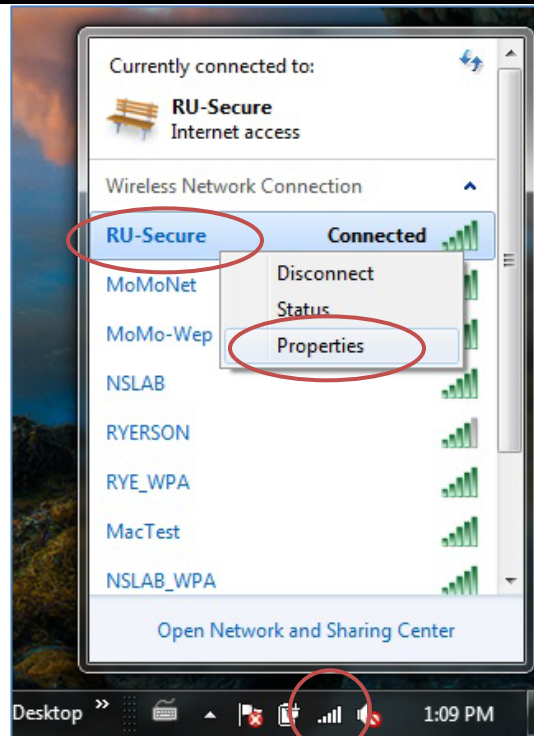
Diagram

Disable Cached Credentials

1. Disable your cached credentials from the taskbar at the bottom of your desktop, click on the wireless icon.
2. From the **Currently connected to:** window, **RIGHT** click the **RU-Secure** network and click **Properties**.

Note: If the Properties option does not display initially, wait a few seconds for the connection status to say Connected and Properties will then be available.

3. In the **RU-Secure Wireless Network Properties** window, **UNCHECK** the **Remember my credentials...** checkbox.
4. Click **OK**.

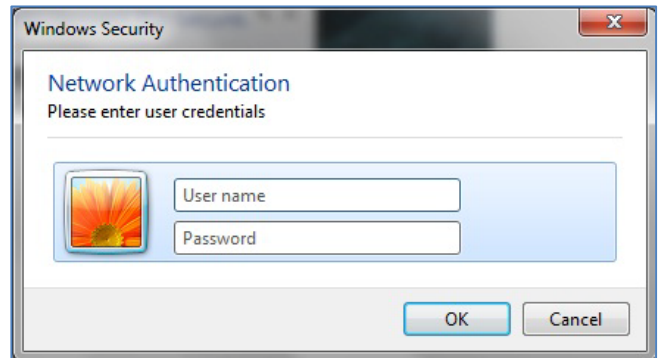
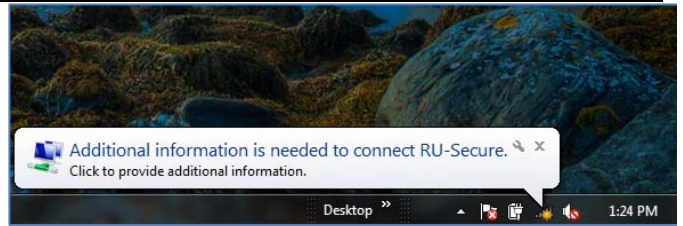


Instruction

Diagram

5. Click the **Additional information is needed to connect RU-Secure** prompt from the taskbar to login to the **RU-Secure** network.

6. From the **Windows Security** window, login with your **my.ryerson** credentials.



You will be connected to the wireless network and your credentials are no longer cached. You will now be prompted each time you wish to log onto the wireless network.