

# Wireless Configuration Instructions for Windows XP

These instructions will configure your wireless connection to the **RU-Secure** wireless network. It will allow you to authenticate and browse using a higher level of security and protection.

**Requirements:**

- These instructions will assume you have the latest Windows updates and are using Windows to manage your wireless connection and not a 3<sup>rd</sup> party vendor's program (Intel etc)
- You must be logged in as an Administrator

Instruction	Diagram
-------------	---------

1. At the bottom right of your screen, on the taskbar, click on your wireless icon and click **Open Network Connections**.



2. From the **Network Connections** window, **right** click on **Wireless Connection** and select **Properties**. The Wireless icon may be small (Fig 1.) or a larger categorized icon (Fig 2.).

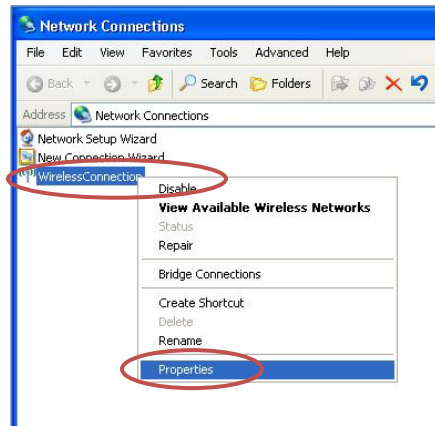


Fig 1.

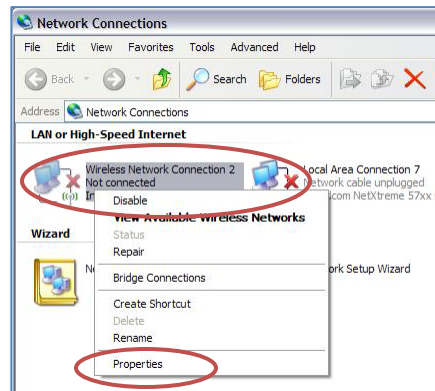
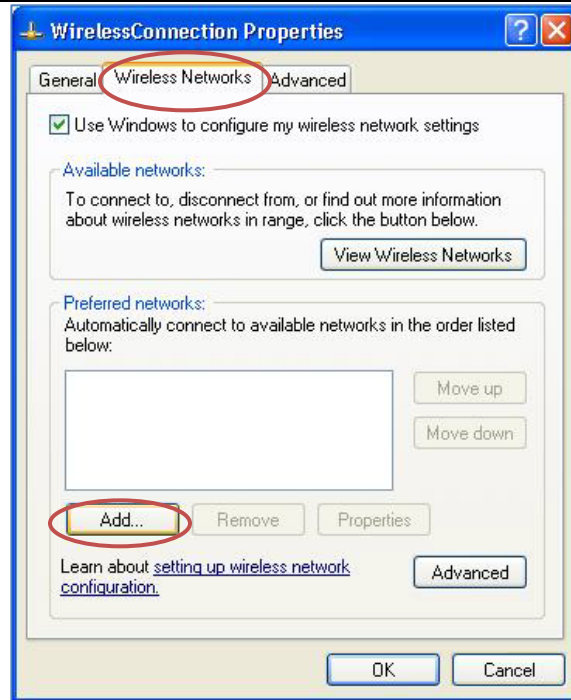


Fig 2.

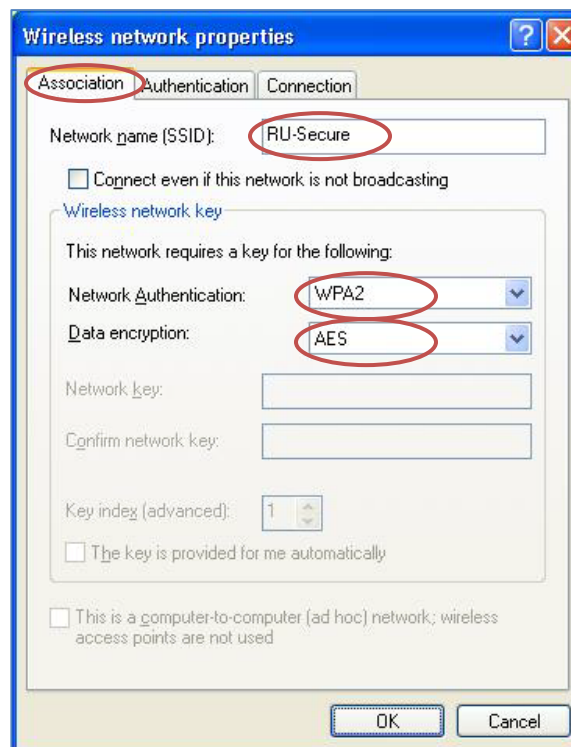
**Instruction**

**Diagram**

3. From the **Wireless Network Connection Properties** window, select the **Wireless Networks** tab.
4. Click **Add** under the **Preferred networks** section, to add the Ryerson wireless network, RU-Secure.



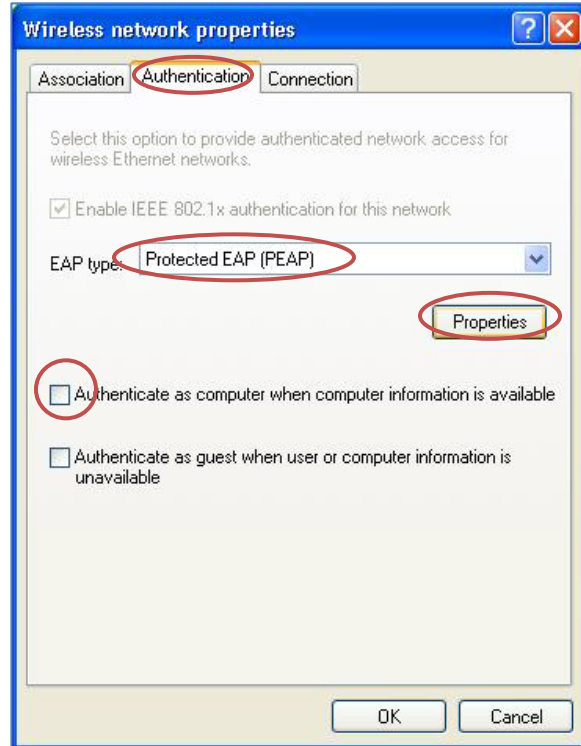
5. From the **Association** tab complete the following:
  - a. Network Name (SSID) – **RU-Secure**
  - b. Network Authentication – **WPA2**
  - c. Data encryption – **AES**
6. Click the **Authentication** tab next – Do **NOT** click **OK**



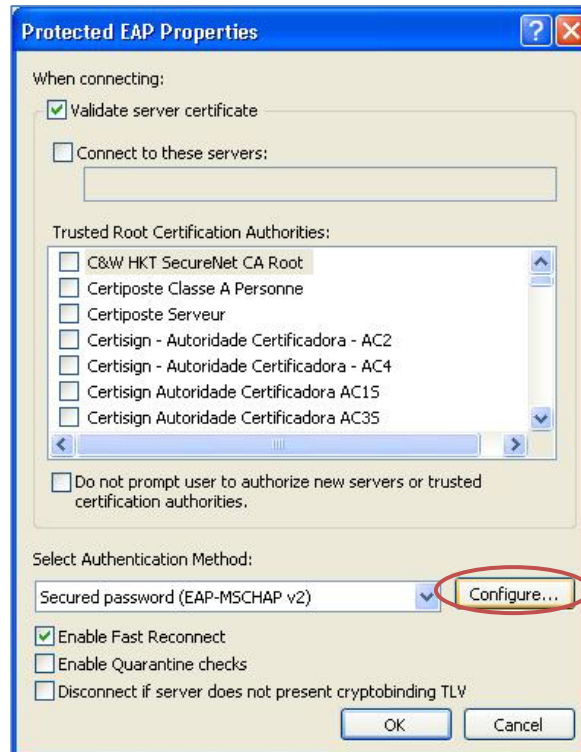
**Instruction**

**Diagram**

7. From the **Authentication** tab, for **EAP type** select **Protected EAP (PEAP)**.
8. **Uncheck the Authenticate as computer when computer information is available** option.
9. Click **Properties**.



10. From the **Protected EAP Properties** window, click **Configure...**



**Instruction**

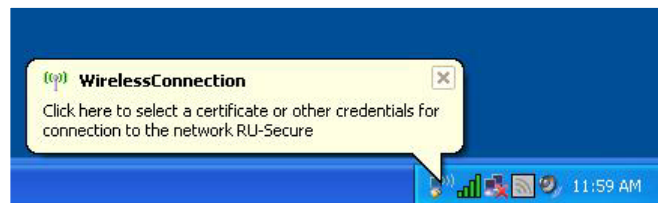
**Diagram**

11. From the **EAP MSCHAPv2 Properties** window, ensure that the checkbox is **unchecked**.
12. Click **OK**.
13. Click **OK** on the remaining screens to close all open windows.



**Connecting to the Ryerson Network**

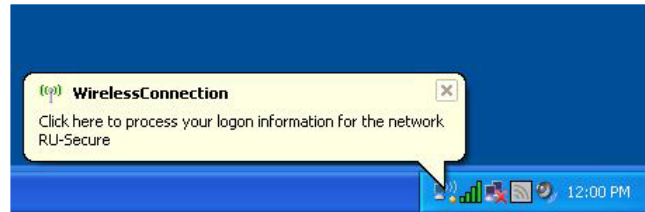
1. Your computer will now connect to the new network automatically. Wait a few moments and the **Wireless Connection** prompt will display on the taskbar, at the bottom right of your screen.
2. Click **Wireless Connection** to continue.
3. The **Enter Credentials** window will display. Type in your username and password:
  - a. **Students/Faculty:** Use your **my.ryerson** credentials
  - b. **Staff:** Use your **CFAPS** credentials
4. Leave the **Logon domain** blank. Click **OK**



**Instruction**

**Diagram**

5. Once again, the **Wireless Connection** prompt will appear on the taskbar at the bottom right of your screen.
6. Click **Wireless Connection** to continue.
  
7. From the **Validate Server Certificate** window, click **OK**.

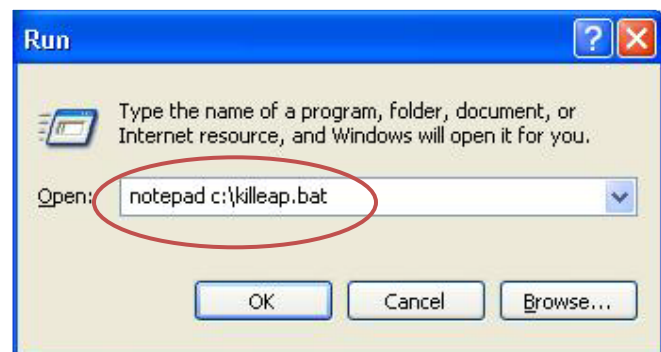


You will now be connected to the **RU-Secure** wireless network. Your credentials are now cached and you will automatically be authenticated when you are within range of the wireless signal.

**\*\*\*PLEASE NOTE\*\*\*:** For security reasons we recommend that you **do NOT cache your credentials**. This is especially important for laptops that will have multiple users.  
**Please follow the remaining steps to disable this feature.**

**Disable Cached Credentials**

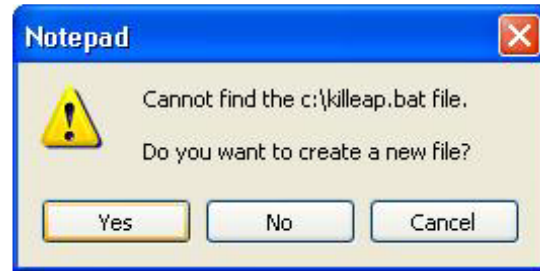
1. To remove your wireless credentials each time you log off the computer you will need to setup a killeap.bat file. Using Notepad create a file called **killeap.bat**. Click **Start > Run**.
2. Enter: **notepad c:\killeap.bat**
3. Click **OK**.



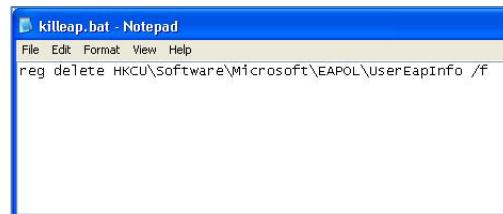
**Instruction**

**Diagram**

- From the **Notepad** window, a prompt will display, **Cannot find the notepad c:\killeap.bat file**. Click **Yes** to create a new file.



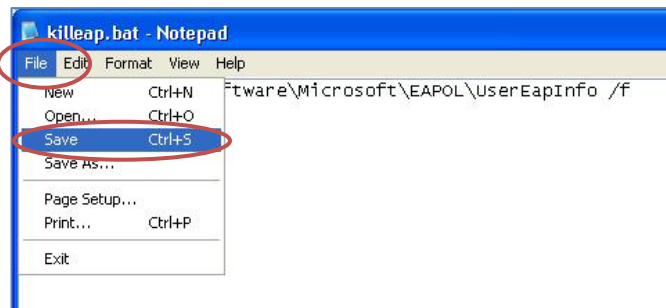
- Notepad will open. Enter the following text on **one** line, please note that it is case sensitive.



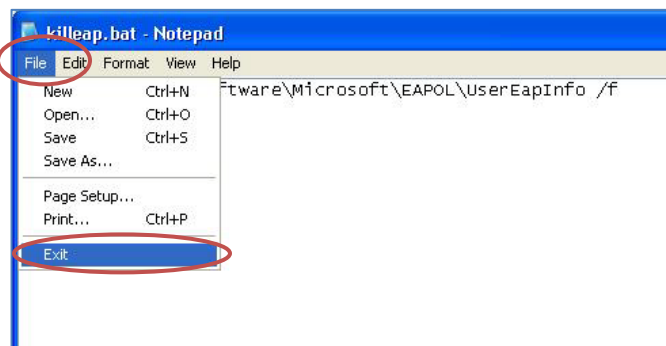
Highlight and copy the following to your notepad file:

**reg delete HKCU\Software\Microsoft\EAPOL\UserEapInfo /f**

- To save this file, click **File > Save**.



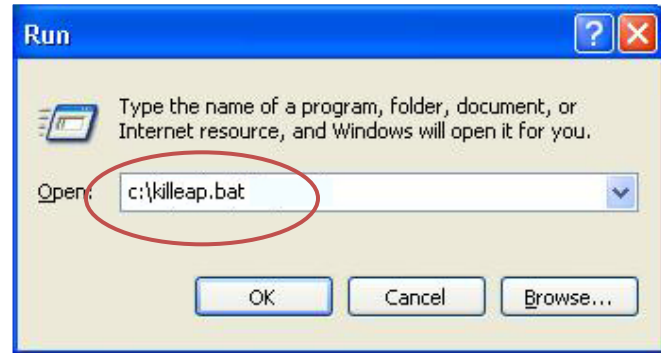
- To exit Notepad, click **File > Exit**.



**Instruction**

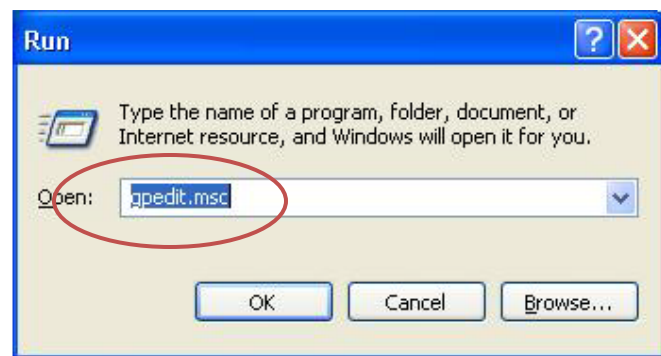
**Diagram**

8. To run the script manually at any time to clear your credentials click **Start > Run**.
9. Enter: **c:\killeap.bat**
10. Click **OK**.

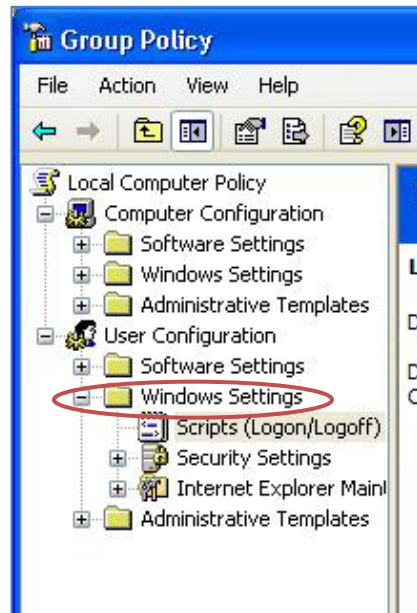


The following instructions will automatically remove your wireless credentials each time you logoff. We now have to add the file to your Windows policy.

11. Click **Start > Run**.
12. Enter: **gpedit.msc**
13. Click **OK**.



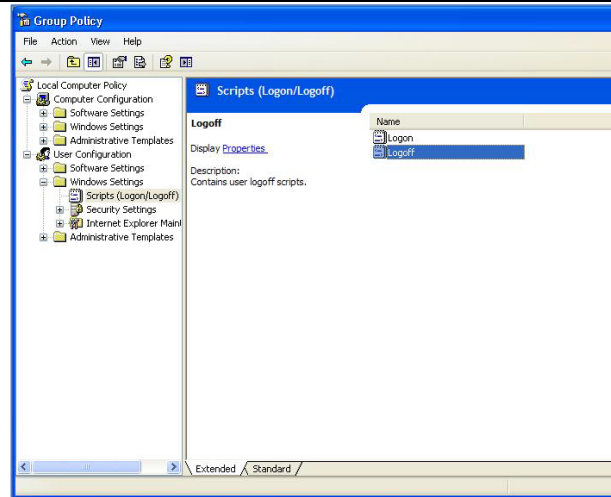
14. From the **Group Policy** windows, click + beside **User Configuration** to expand the option.
15. Click + beside **Windows Settings**
16. Click **Scripts**.



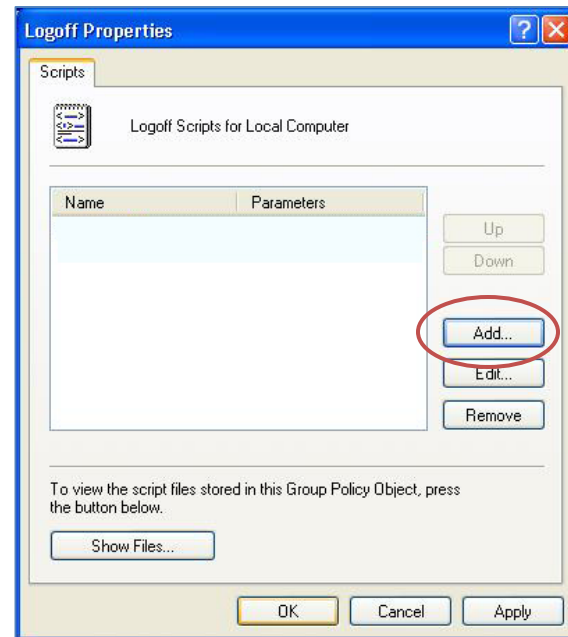
**Instruction**

**Diagram**

17. From the right side of the window, double click **Logoff**.

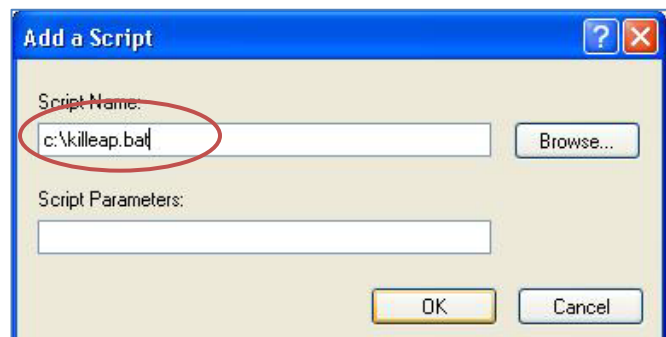


18. From the **Logoff Properties** window, click **Add**.



19. For **Script Name** enter **c:\killeap.bat**

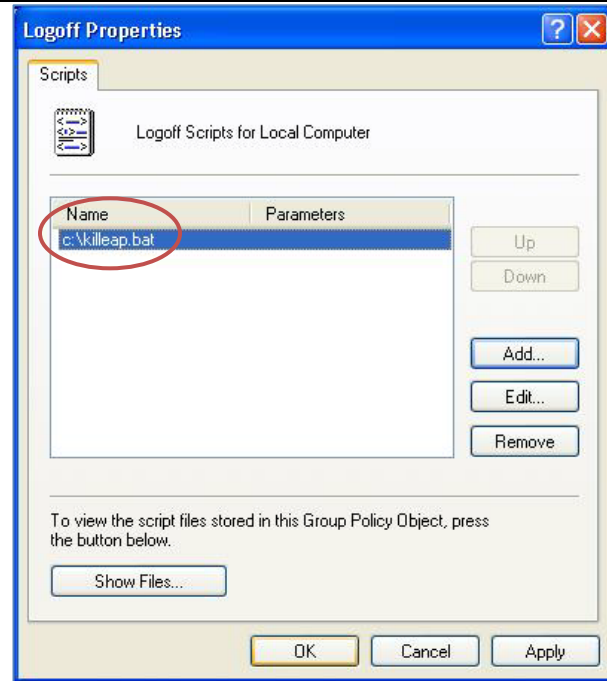
20. Click **OK**.



**Instruction**

**Diagram**

- 21. From the Logoff Properties window, the new script name will display. Click **OK**.
- 22. Close the **Group Policy** window.



Your credentials will now be removed each time you log off your computer.