

Installing QVT Term for Windows

(Windows 2000/XP Professional)

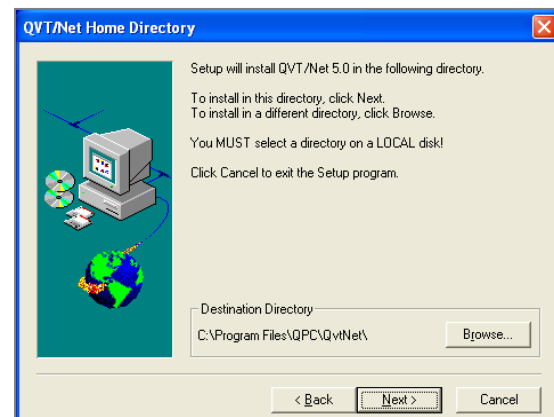
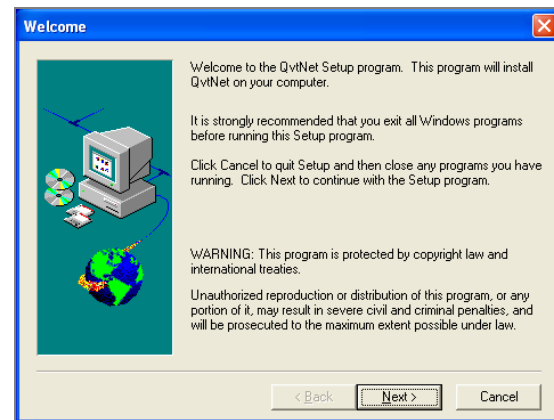
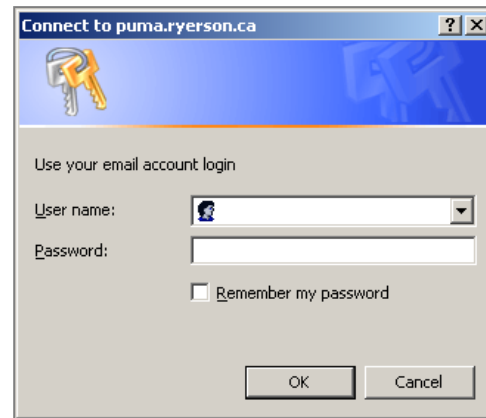
Instruction

Diagram

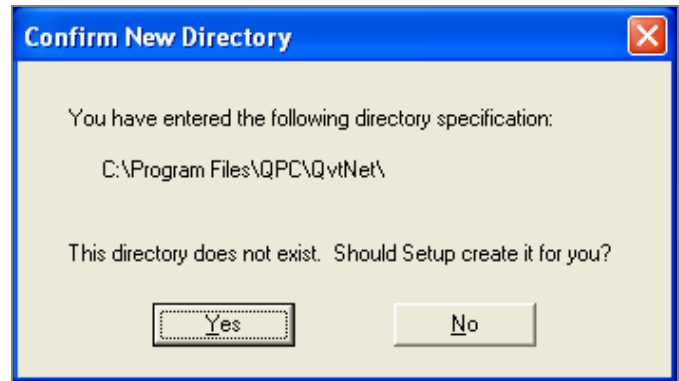
1. At the **Connect to puma.ryerson.ca** screen, type in your RMail username and password and click **OK**.
2. At the resulting **File Download** screen click **Open**.
Note: Internet Explorer 5.x users may see a different **File Download** screen. Ensure that **Run this program from its current location** is selected and click **OK**.

If a resulting **Security Warning** screen appears, click **Yes** to continue.

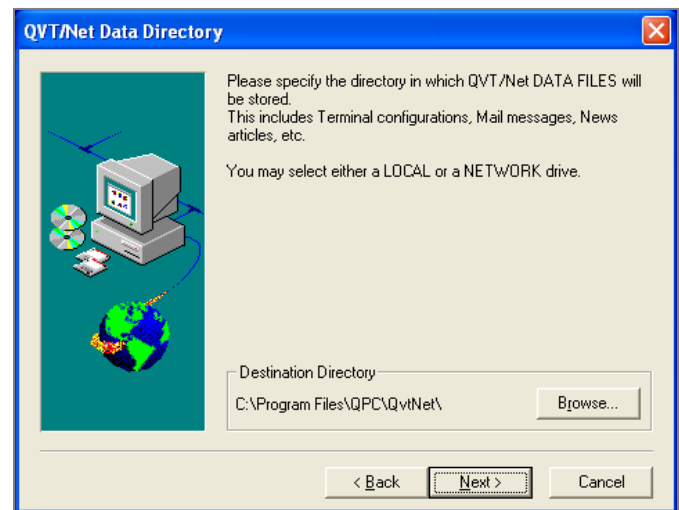
3. At the **Welcome** screen, click **Next**.
4. At the **QVT/Net Home Directory** screen, click **Next**.



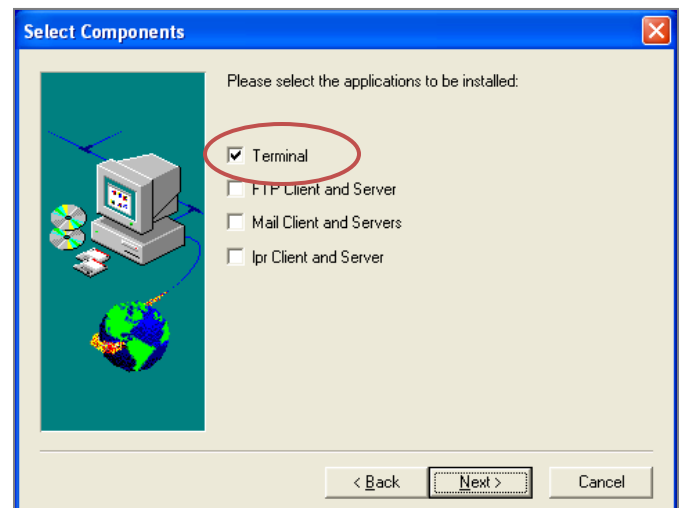
- If the **Confirm New Directory** screen appears, click **Yes** to continue.



- At the **QVT/Net Data Directory** screen, click **Next**.

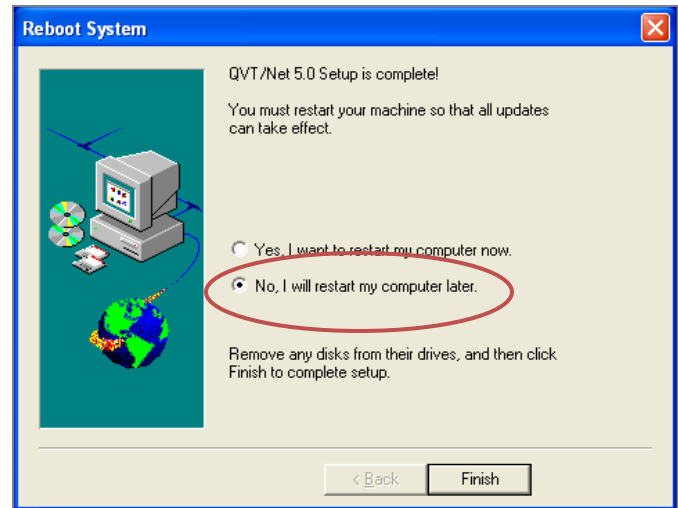


- At the **Select Components** screen, ensure that **Terminal** is selected and all other choices are **NOT** selected.

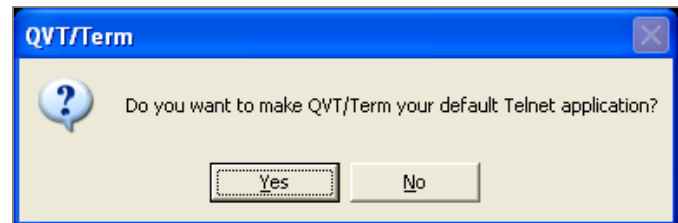


- Click **Next**.

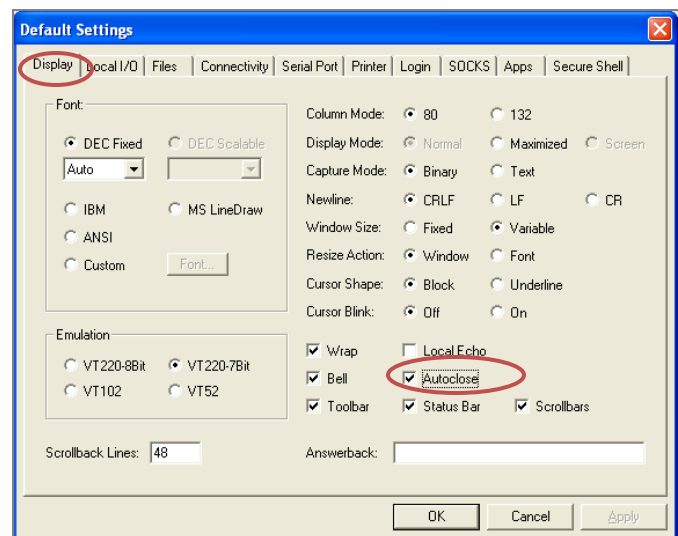
9. At the **Reboot System** screen, ensure that **No, I will restart my computer later.** is selected.
10. Click **Finish**.



11. Upon completion click on **Start > All Programs > QvtNet > QVT Term**, to start Qvt Term.
12. At the **QVT/Term** screen, click **Yes**.

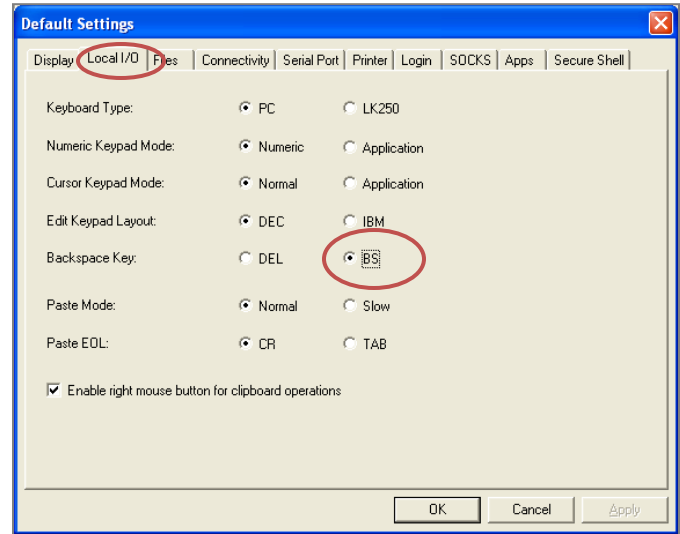


13. At the resulting screen, click on **Setup>Default Settings**.
14. Ensure that **Autoclose** is selected.
15. Click on the **Local I/O** tab.



16. At the resulting screen, ensure that **BS** is selected.

17. Click on the **Files** tab.



18. In the **Keyboard Mapping File:** dialogue box, type **Master.KM**.

19. Click **OK**.

20. Upon completion, shut down all open windows.

21. Click on **Start > Shutdown > Restart** to ensure QVT is properly installed.

The QVT Client is now installed on your computer.

