

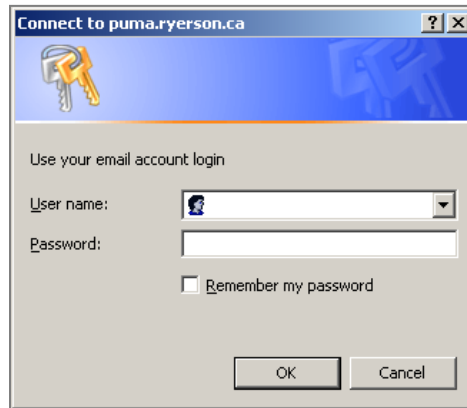
Downloading and Installing SSH for Windows

The following procedure will allow you to download and install the SSH Client for Windows 2000/XP on your office PC.

If you require further assistance, please call the Help Desk.

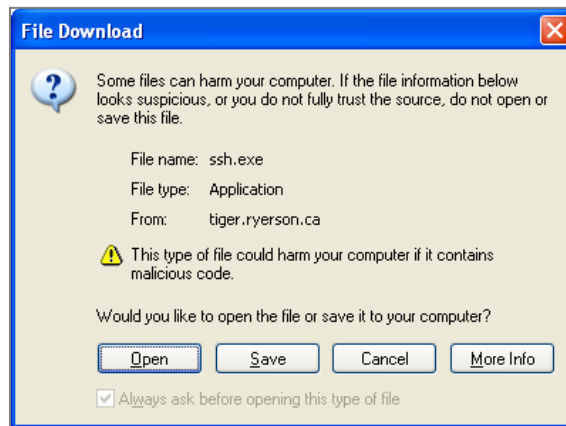
Instruction	Diagram
-------------	---------

- At the **Connect to puma.ryerson.ca** screen, type in your username and password.
- Click **OK**.



- At the **File Download** screen, click on the **Open** button.

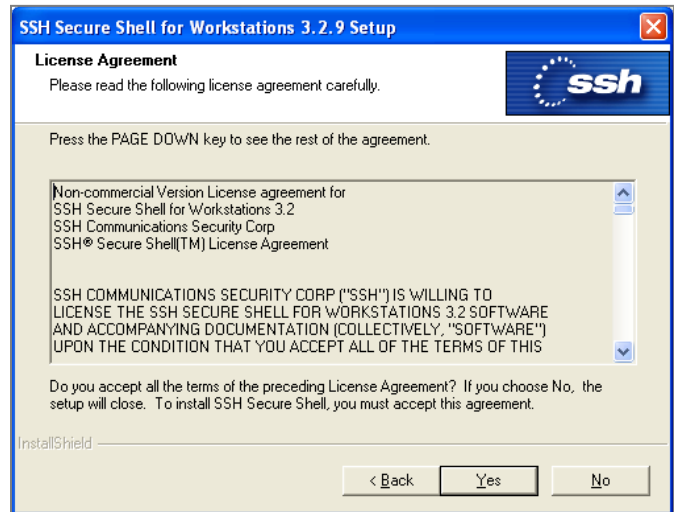
NOTE: Internet Explorer 5.x users may see a different **File Download** screen. Ensure that **Run this program from its current location** is selected and click on **OK**.



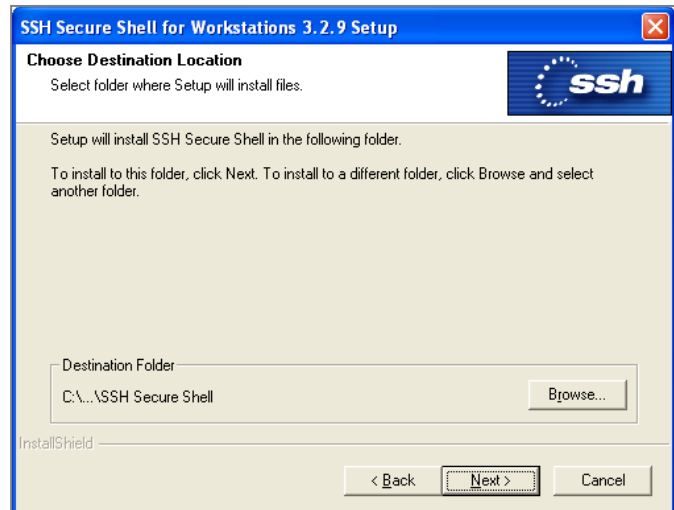
- At the **Welcome to the SSH Secure Shell Setup Wizard** screen, click **Next**.



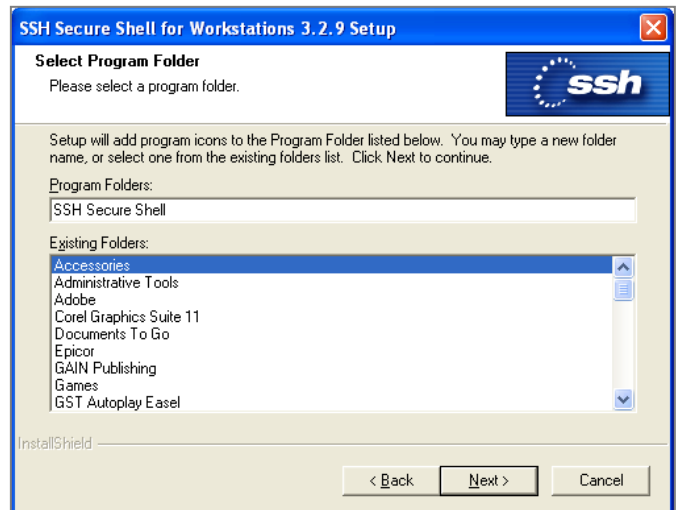
5. At the **License Agreement** screen, click **Yes**.



6. At the **Choose Destination Folder** screen, click **Next**.



7. At the **Select Program Folder** screen, click **Next**.

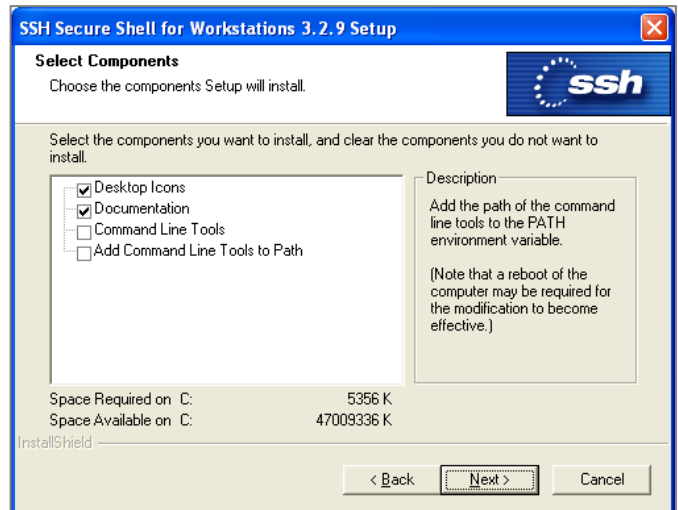


8. At the **Select Components** screen, ensure that **Desktop Icons** and **Documentation** are selected.

9. Click **Next**.

10. At the **Check Setup Information** screen, click **Next**.

11. At the **InstallShield Wizard Complete** screen, click **Finish**.



12. Right click on the **Start** button (bottom left of your screen), and click **Explore**.
13. Locate and click on **Local Disk (C:)**.
14. Locate and click **Program Files** to expand the folder.
15. Locate and click **SSH Communications Security** to expand the folder.
16. Double click on the **SSH Secure Shell** folder to expand it.
17. Locate and click once on the **license.dat** file to select it, then press the **Delete** key to remove the file.

The SSH Client is now installed on your computer.