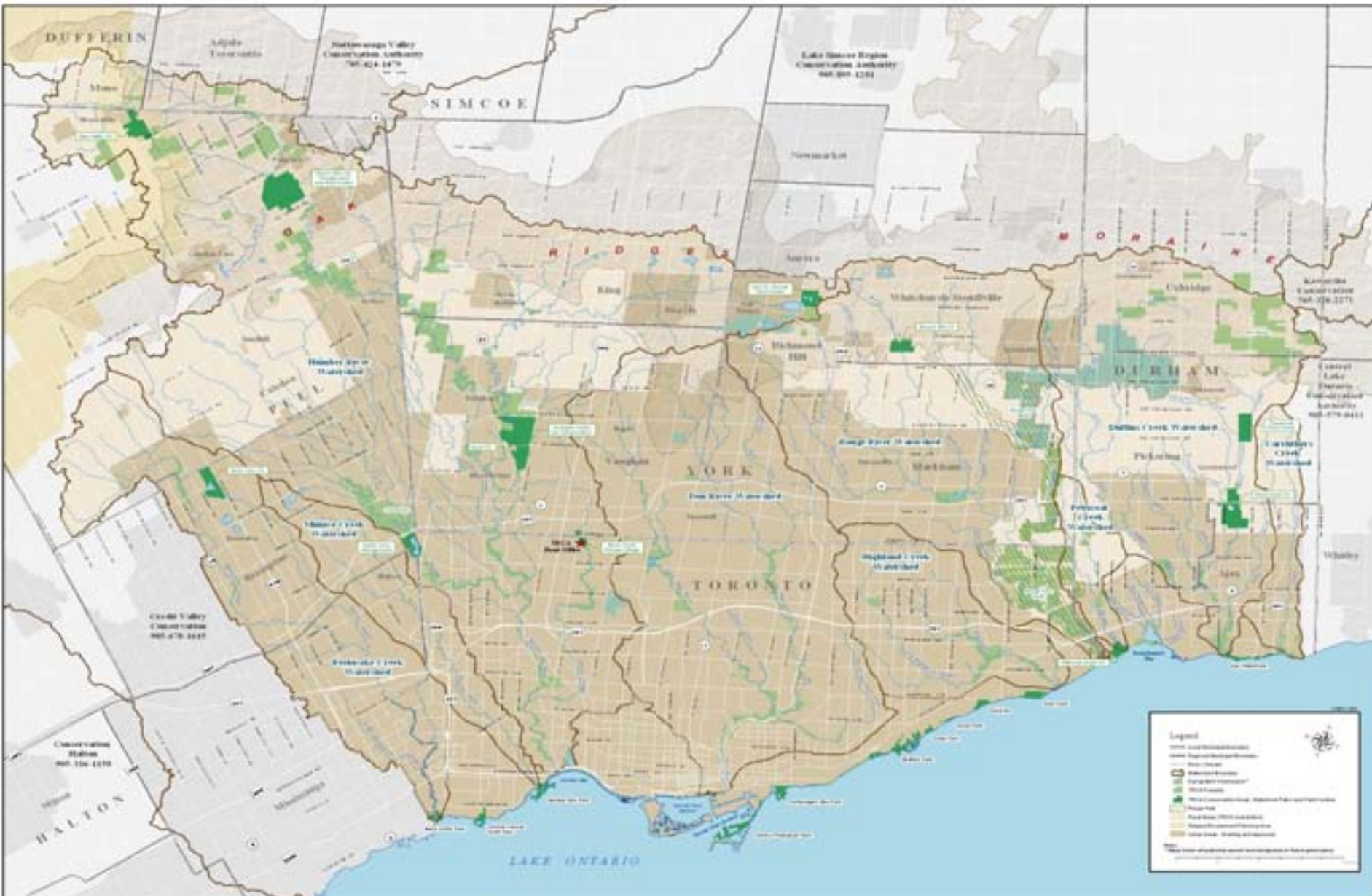


Changing the Conversation: New Partners, New Crops and New Ways of Doing Business

**Gary Wilkins, Toronto and Region Conservation
May 2, 2008**

Toronto and Region Conservation Jurisdiction




TRCA's Agricultural History

- Land acquired in 1950s and 60s for flood and erosion control.
- Livestock and traditional cash crops.
- Approx. 3000 acres (excluding Rouge Park lands).
- 1990's to Present – Rural Clean Water Program.
- Agriculture regarded as an interim use - to be reforested in the future or other use.



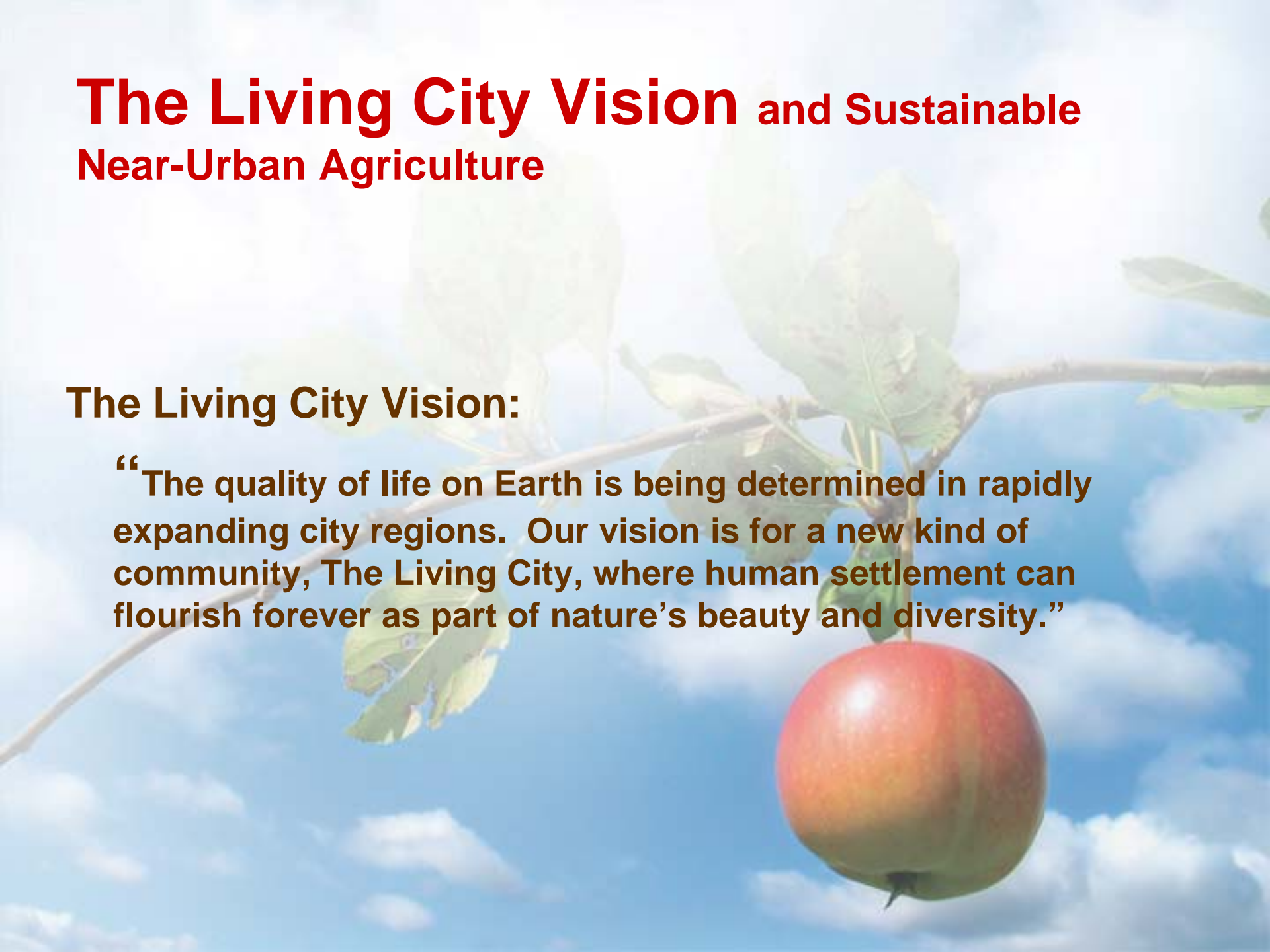
Over the years.....

- Reduced accessibility to farmlands
 - Implementation of costly BMPs
 - Short term leases
 - Conflicts with terrestrial natural heritage targets
- 
- Decline in rental acreage
 - Decline in land stewardship
 - Termination of leases
 - Reforestation of TRCA's agricultural lands

The Living City Vision and Sustainable Near-Urban Agriculture

The Living City Vision:

“The quality of life on Earth is being determined in rapidly expanding city regions. Our vision is for a new kind of community, The Living City, where human settlement can flourish forever as part of nature’s beauty and diversity.”



TRCA - *The Living City* Vision

- **Healthy Rivers and Shorelines**
- **Regional Biodiversity**
- **Business Excellence**
- **Sustainable Communities**



Sustainable Near-Urban Agriculture and the Living City Vision

- Provides positive matrix influence for adjacent natural heritage.
- Reduces our ecological footprint.
- Promotes social equity and food security in communities.
- Provides opportunities for community economic development.
- Provides a space for celebrating the cultural diversity of communities by growing a new and/or diverse range of crops.



Sustainable Agriculture Policy and Operational Procedures and Guidelines

- **Conserve TRCA's land for a new form of agriculture.**
- **Apply innovative and sustainable agricultural production methods.**
- **Adhere to BMPs and EFPS.**
- **Negotiate multi-year lease agreements.**
- **Buy local for TRCA facilities.**



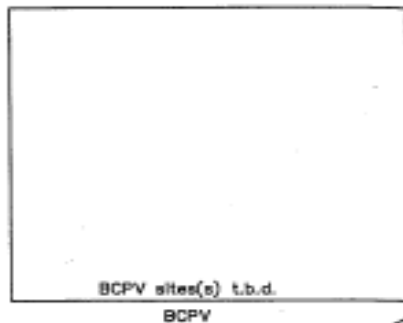
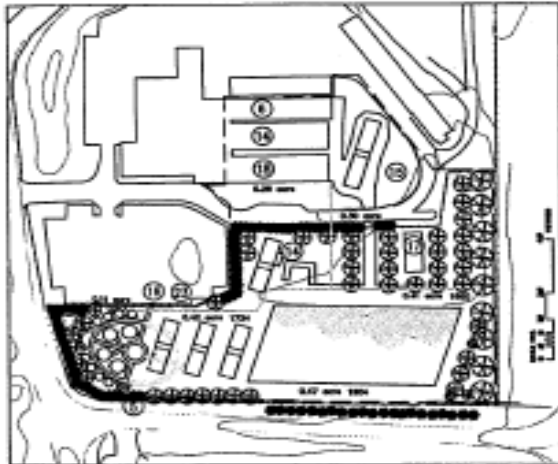
Partnerships and Projects

- **Toronto Urban Farm - 8 acres at Jane and Steeles under management agreement with City of Toronto to establish a youth training farm.**
- **FarmStart's New Farmers initiative at McVean -37 acres leased to FarmStart for training and research farm facility, including community gardens for new farmers.**
- **The Living City Farm at Kortright .**

Toronto Urban Farm Goals and Objectives

- Youth employment and leadership training skills.
- Increase participants' knowledge and skills of organic farming, environmental stewardship and local food systems.
- Build community capacity to address local food security and environmental issues.
- Promote healthy nutrition and active lifestyles.
- Increase the availability of rare and nearly extinct vegetable and other plant species.





LOCATION MAP
N.T.A.

BOUNDARY INFORMATION TAKEN FROM
TORONTO REGION CONSERVATION
HURON RIVER FLOOD PLAN
AND FILL REGULATION LINE
MAPPING SHEET No. 12.

This map was compiled photogrammetrically from
1:50000 aerial photography flown in 1970 by
Bartlett Survey Inc. at a scale of 1:25000.
The contour interval is 1 metre above/below
mean sea level.

The vertical datum to mean sea level as established
by the Geographic Survey of Canada.

North American Datum 1983, U.T.M. 8° projection
Date 17, Central Meridian 81° W.

Grid Interval 100 metres.



METRIC

CONVERSION TABLE FOR USE IN ALL AREAS OF THE PLAN
AND ALL DIMENSIONS SHALL BE SHOWN IN METRES. ALL
DIMENSIONS ARE APPROXIMATE AND SHALL BE VERIFIED BY
FIELD SURVEY.

BEARING NOTE

BEARING NOT SHOWN.

BOUNDARY NOTE

BOUNDARY INFORMATION IS BASED ON INFORMATION
SUPPLIED BY CLIENT.

NO.	DATE	DESCRIPTION
1.	20/04/2014	Re-organize 80 elements in 3 phases
2.	25/04/2014	Revisions, Corrections, Structure as follows
3.	26/04/2014	REVISION

C. BRAD PETERSON
ENVIRONMENTAL MANAGEMENT AND
LANDSCAPE ARCHITECTURE

6050 SHEPPARD AVE. E. #101 SCARBOROUGH, ONT. M1S 1T6
TEL: (416) 754-0288 FAX: (416) 754-0289



PROJECT
Black Creek Urban Agriculture
Project

WORKING TITLE
SUSTAINABLE FARM
MASTER PLAN

DATE	BY	REVISION
2014.04.20	GP	0001

LEGEND

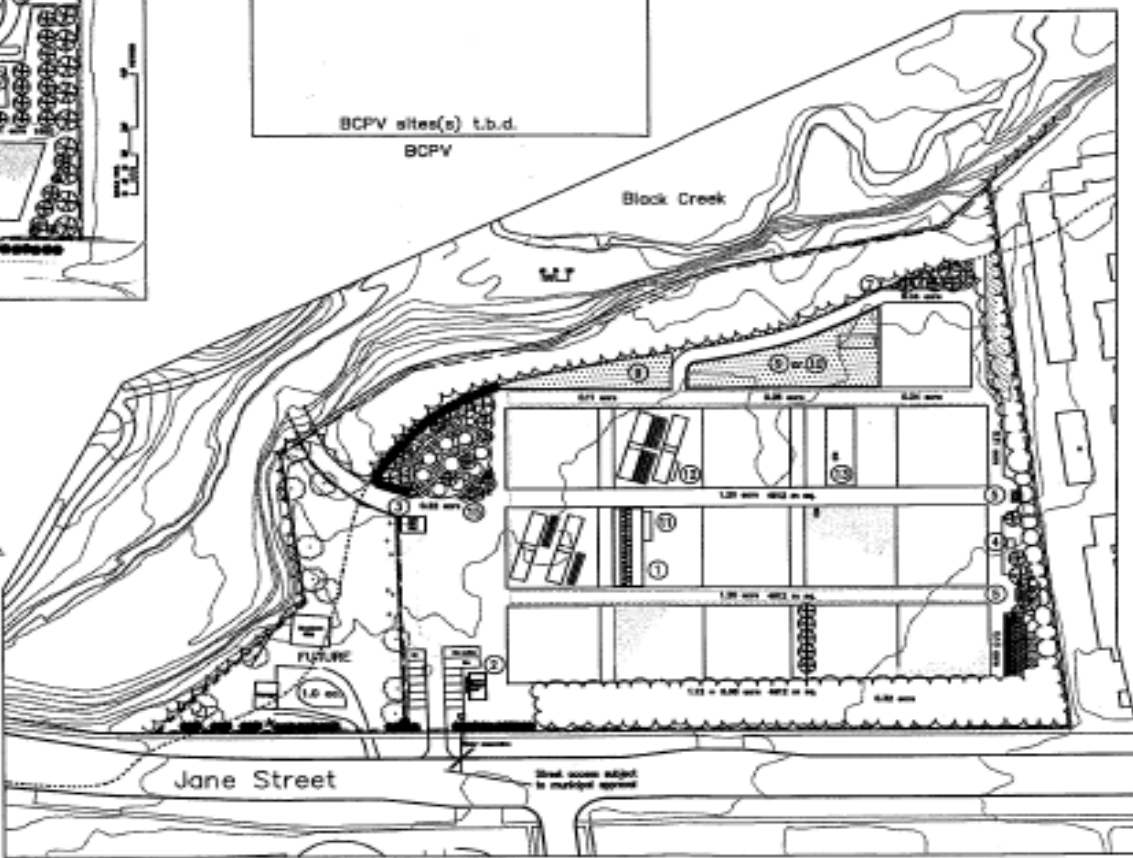
Rockcliff: 2.8 ac.

- PROPERTY**
- SUBJECT PROPERTY BOUNDARY
 - HISTORIC FENCELINE
 - TOPOGRAPHIC CONTOUR (Interval 0.5 metres)
 - REGULATED FILL LINE
 - EXISTING FOREST, PROPOSED WOODLAND AND HEDGEROW BOUNDARY
 - WATER COURSE
 - D.L. OR PROPOSED CHAIN LINK FENCE, GATE
 - ANNUAL FENCE (MAY BE ELECTRIFIED)
 - PROPOSED PRIMARY WATER LINE
 - PROPOSED SERVICES: gas, hydro, telephone, etc.

- VEGETATION - EXISTING**
- TREES - TO REMAIN
 - TREES - TO RELOCATE
 - TREES - TO REMOVE
- VEGETATION - PROPOSED**
- DECIDUOUS TREES: fruit, nut, ornamental
 - CONIFEROUS TREES: pine, red, ornamental
 - EDIBLE SHRUBS, CANE FRUITS
 - VINES
 - CONIFEROUS HEDGEROW

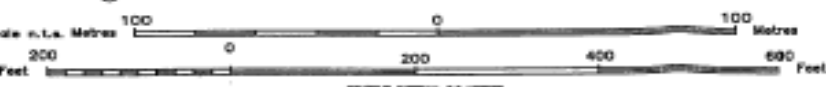
- SUSTAINABLE FARM ELEMENTS**
- ORCHARD POLY-CULTURE <4.0M HEIGHT: HERBS, CANE FRUITS, SMALL FRUIT AND NUT-BEARING SHRUBS, DWARF FRUIT TREES, SMALL NUT TREES, SUCCESSIONAL AND STABLE
 - EDIBLE BORDER <4.0M HEIGHT: HERBS, CANE FRUITS, SMALL FRUIT AND NUT-BEARING SHRUBS, DWARF FRUIT TREES, SMALL NUT TREES, SUCCESSIONAL AND STABLE
 - PERENNIAL VEGETABLES
 - GRASSES AND FLOWERS, POSSIBLE FALLOW
 - 10' CSA INTENSIVE ROW CROP, 48" AND 36" WITH 12" ACCESS, WITH CHICKEN TRACTOR
 - INITIAL ANNUAL HERBACEOUS WIND BARRIER not shown
 - PERMANENT OR MOVABLE HOOPHOUSE (75'x42' (3,213.2sqm), WITH HARDENING OFF HOOPS

- Phase I - priority items marked with *
- 1 CENTRAL COMPOST *
 - 2 STORAGE SHED 16x32' (Phase II 338M²) *
 - 3 DRIVE SHED 20x26' (may be Phase II)
 - 4 TOOL SHED 8x12' *
 - 5 BENCH WITH VINE ARBOUR
 - 6 POLYHOUSE *

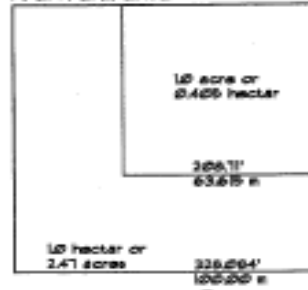


Jane St. 8.8 ac.

- 1 APARY
- 2 HERBAGE VEGETABLES (not shown)
- 3 LOW-MICE VEGETABLES or ADD'L INTENSIVE CULTURE *
- 4 GOAT Paddock, ETC., W/ SHELTER
- 5 COMPOST WITH PIG SHELTER
- 6 POLYHOUSE(S) (sq. available) W/ OPT. CHICKEN SHELTER *
- 7 CONFINED ROW AREA W/ CHICKEN TRACTOR
- 8 AQUACULTURE BISHALTER
- 9 CHILDREN'S GARDEN - JANE ST. *
- 10 CHILDREN'S GARDEN - ROCKCLIFF *
- 11 POULTRY/DUCK SHELTER
- 12 GREENHOUSE FOR FOUR SEASON HARVEST, SETS *



AREA REFERENCE



PHASE I OF 3

CONTOUR INTERVAL: 0.5 METRES

FarmStart New Farmers Initiative at McVean

- Offers access to land, equipment, infrastructure at reduced rates.
- Provides business planning support, technical training, mentorship.
- TRCA to provide stewardship and educational programming.



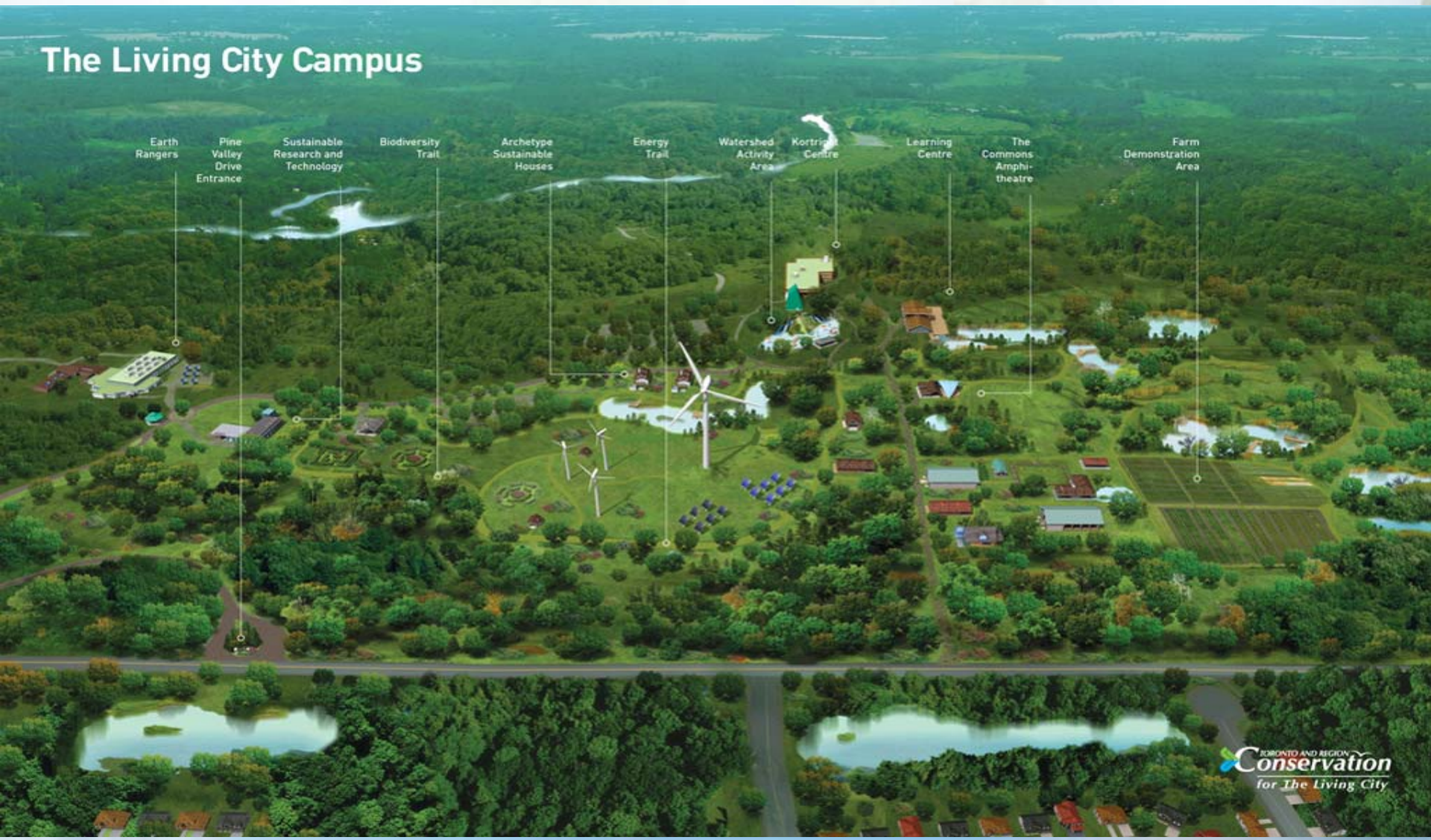
The Living City Campus at Kortright

- Enhance understanding of interrelationships in and between healthy ecological systems and our lifestyles
- Develop relevant and innovative demonstrations and programs
- To motivate, and support individuals, organizations, government and businesses
- Foster on-site research collaborative with academics, business and government



The Living City Campus at Kortright

The Living City Campus



Earth
Rangers

Pine
Valley
Drive
Entrance

Sustainable
Research and
Technology

Biodiversity
Trail

Archetype
Sustainable
Houses

Energy
Trail

Watershed
Activity
Area

Kortright
Centre

Learning
Centre

The
Commons
Amphi-
theatre

Farm
Demonstration
Area

Urban Agriculture at the Living City Campus at Kortright

The Living City Campus

Northern Region—Urban Agriculture and Wetlands



The Living City Farm at Kortright

A photograph of a single red apple hanging from a branch with green leaves. The background is a bright blue sky with scattered white clouds. The apple is in the lower right quadrant of the image, and the branch extends from the left towards the center.

- **New Farmers internship program.**
- **Visitors will learn about sustainable farming practices and connect with the sources of their food.**
- **Children to participate in farm tours and curriculum-linked farming projects.**
- **Community supported agriculture (CSA) program.**
- **Local food programming and events.**
- **Gate sales.**

Next Steps

- **Remain a partner in the implementation of the GTA Agricultural Action Plan.**
 - **Finalize TRCA policy and operational procedures and guidelines.**
 - **Explore and facilitate new partnerships.**
 - **Continue to strengthen TRCA's educational programming around sustainable agriculture and stewardship.**
 - **Buy local food for TRCA facilities.**
 - **Facilitate urban agriculture in community design.**
- 
- A photograph of a single red apple hanging from a branch with green leaves. The background is a bright blue sky with scattered white clouds. The apple is in the lower right quadrant of the image, and the branch extends from the left towards the center.

A photograph of a single red apple hanging from a thin brown branch. The apple is in the lower right quadrant, showing a gradient from red to yellow-green. The branch extends from the left towards the center. Several green leaves are attached to the branch, some showing signs of being eaten. The background is a bright blue sky with scattered white clouds. The text is overlaid in the center of the image.

Questions????

**Contact info:
gwilkins@trca.on.ca**