

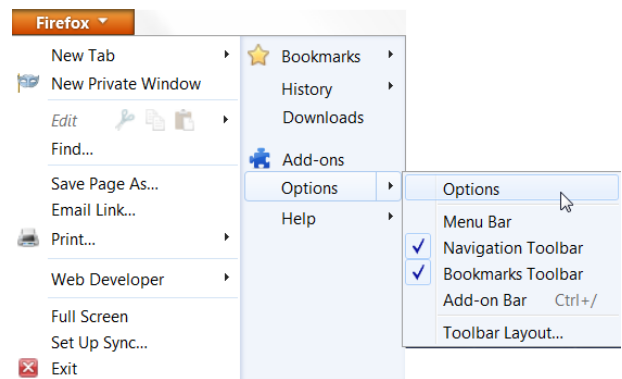
The built-in PDF viewer introduced with Mozilla Firefox, Google Chrome, and Apple Safari does not support XFA-based PDF forms. XFA-based PDF forms will open in Firefox, Chrome, and Safari if the browsers are configured correctly. They need to have Adobe Reader as the default viewer. Perform the following steps to configure Firefox, Chrome, and Safari to open PDFs using Adobe Reader or Adobe Acrobat.

Ensure that you have Adobe Reader or Adobe Acrobat installed on your machine.

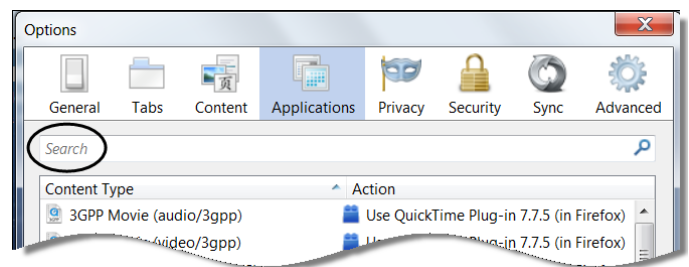
Configure Firefox

1. In Firefox, from the **Firefox** menu, select **Options** | **Options**.

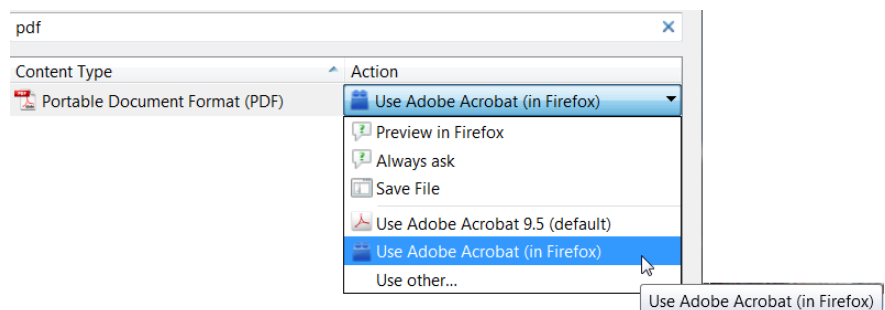
If your Firefox user interface has a menu, select **Tools** | **Options**.



2. On the **Applications** tab, type **PDF** in the search field.



3. In the search results, next to **Portable Document Format (PDF)** content type, select from the **Action** menu **Use Adobe Acrobat (in Firefox)** | Click **OK**.
4. Restart Firefox.



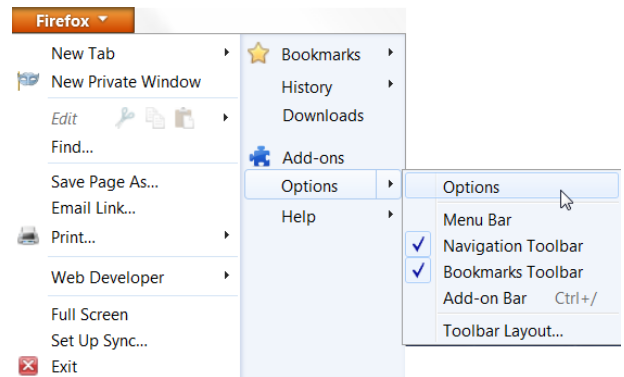
If this does not resolve the issue, you may have to [open the form using the Adobe Reader application](#).

Change Browser Settings to View Forms

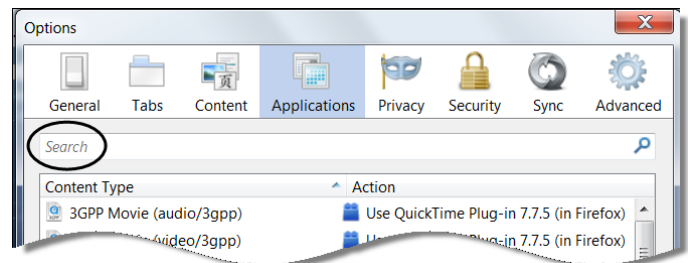
Open Using Adobe Reader

1. In Firefox, from the **Firefox** menu, select **Options** | **Options**.

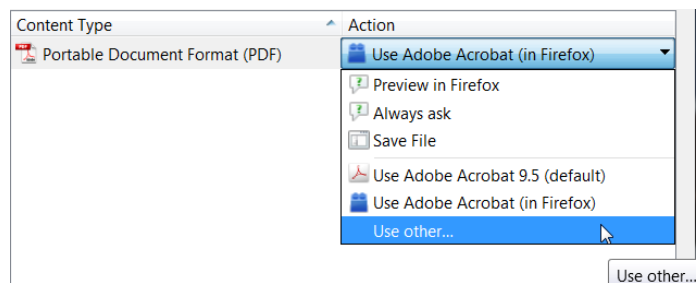
If you have your Firefox user interface has a menu, select **Tools** | **Options**.



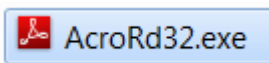
On the **Applications** tab, type **PDF** in the search field.



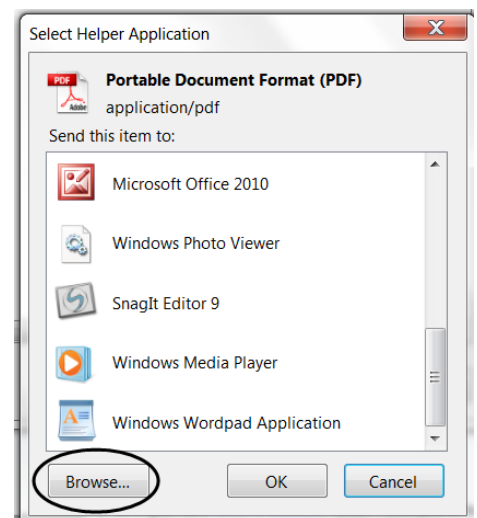
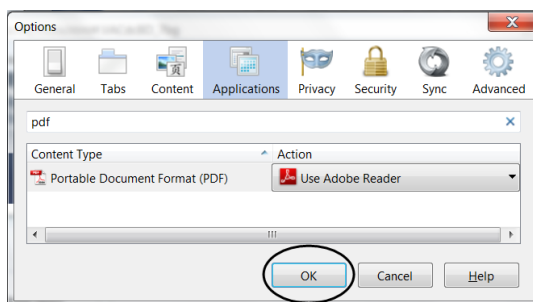
2. In the search result, next to **Portable Document Format (PDF)** content type, select **Use Other...**



3. Click **Browse**.
4. Navigate to your local disk (C drive) | **Program Files (x86)** | **Adobe** | **Reader** | **AcroRd32.exe**.



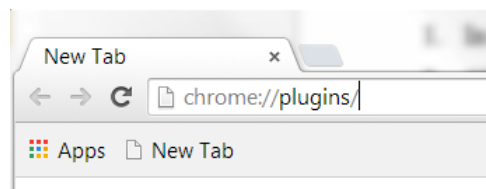
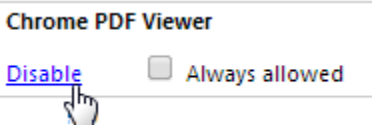
5. Click **OK**.



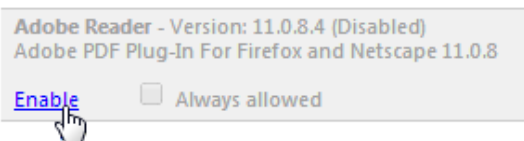
Change Browser Settings to View Forms

Configure Chrome

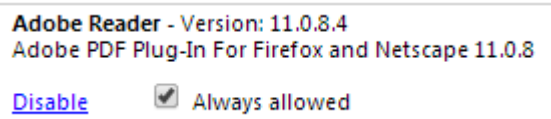
1. In Chrome, copy this address into the search text box and click enter: `chrome://plugins/`
2. Under **Chrome PDF Viewer**, click **Disable**.



3. Under **Adobe Reader - Adobe PDF Plug-In for Firefox and Netscape**, click **Enable**.



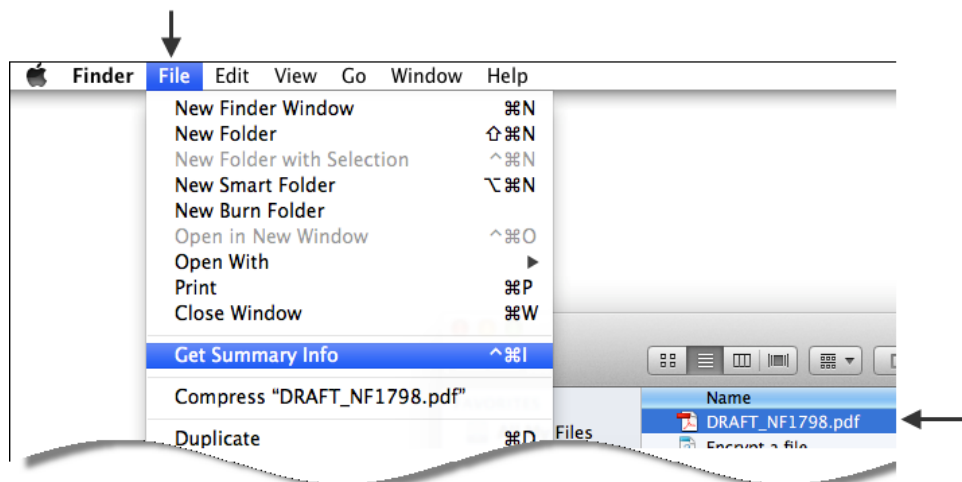
4. To the right of that, check the box next to **Always Allowed**.



5. Restart Chrome.

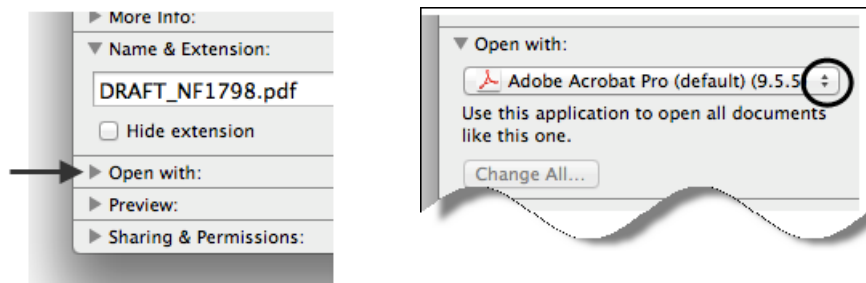
Configure Safari

1. In the Finder, select a PDF and choose **File | Get Info** (or **Get Summary Info**).



Change Browser Settings to View Forms

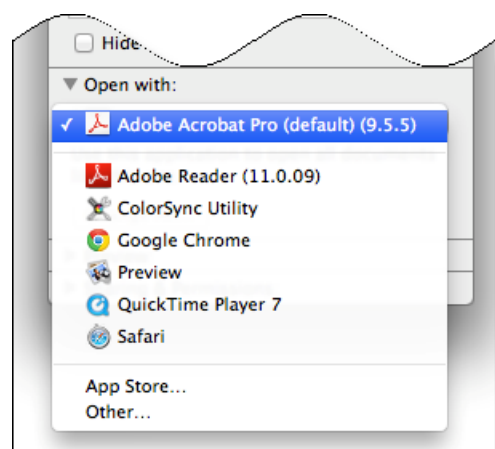
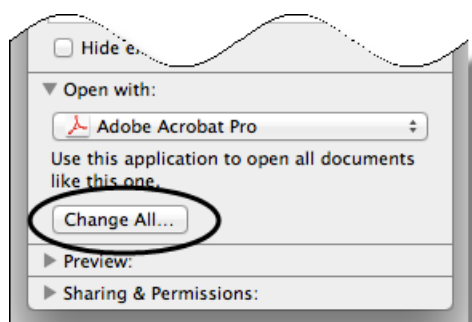
2. Next to **Open with:** click the arrow ▶ to expand your options.



3. From the **Open with:** menu, select one of the following:

- Adobe Acrobat
- Adobe Reader

4. Click **Change All.**



5. When asked if you want to change all similar documents, click **Continue.**