

MIGRATION DISRUPTED

**How technological transformation
is reshaping human mobility**

MAY 8–9, 2024

TORONTO METROPOLITAN UNIVERSITY

Wi-Fi Password

Network: TMU

Username: migration.disrupted

Password: TMUguest253#

The CERC in Migration and Integration program and
Migrant Integration in the Mid-21st Century: Bridging Divides program
are generously supported by:



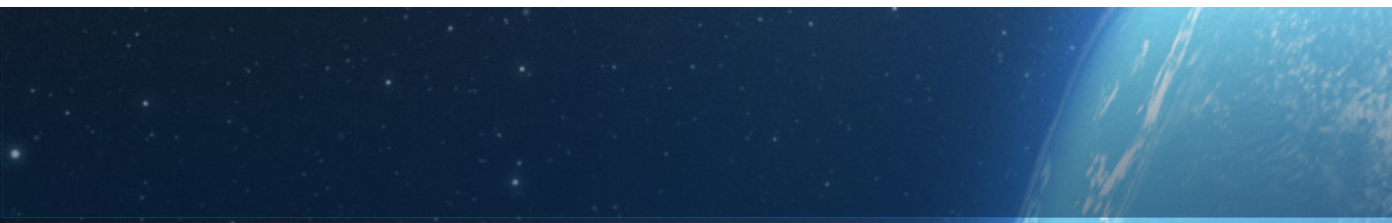
Government
of Canada

Gouvernement
du Canada

Canada Excellence
Research Chairs

Chaires d'excellence en
recherche du Canada

Canada



MIGRATION DISRUPTED

**How technological transformation
is reshaping human mobility**

Welcome to CERC Migration's fifth annual conference, and the first that we are hosting jointly with members of the new research program, Bridging Divides. Both research programs have the success of migrant integration as a primary concern. As all our conference participants know, migration is happening at accelerating rates the world over. How well countries are able to integrate migrants so they become prosperous and vital contributors to society will be pivotal to our future. Add to that the rapid social and economic change that is now being driven by the rise in advanced digital technologies and our future becomes even more uncertain.

It is urgent that we turn our attention to the innovation but also disruption that technology can bring, and ask – will it be harnessed as a positive force for migrant integration or left to cause further divides? I look forward to our exploratory talks over the next two days that will help give clarity and focus to the risks and opportunities that lie ahead.

I'd like to extend a sincere thanks to my TMU co-convenor Ebrahim Bagheri, Canada Research Chair in Social Information Retrieval and Scientific Co-Director of Bridging Divides, for his support in developing our program, and to the organizing team, panelists, and all our participants who have traveled near and far to make this conference possible.

All the best for an enjoyable and inspiring conference,



**Canada Excellence Research Chair in Migration and Integration
and Scientific Director, Bridging Divides,
Toronto Metropolitan University**

WEDNESDAY, MAY 8, 2024

8–9 AM REGISTRATION AND CONTINENTAL BREAKFAST

9–9:30 AM WELCOME AND INTRODUCTION

Mohamed Lachemi, President and Vice-Chancellor, Toronto Metropolitan University

Steven N. Liss, Vice-President, Research and Innovation, Toronto Metropolitan University

Anna Triandafyllidou, Canada Excellence Research Chair in Migration and Integration and Scientific Director, Bridging Divides

Ebrahim Bagheri, Canada Research Chair in Social Information Retrieval, NSERC Industrial Research Chair in Social Media Analytics, and Scientific Co-Director, Bridging Divides

SESSION 1

ROUNDTABLE

9:30–11:15 AM

Who belongs? How do ADTs impact migration, citizenship and democracy?

The rise of advanced digital technologies (ADTs) opens up new possibilities for migrant civic and political participation, but also introduces new challenges. ADTs can help migrants expand their social networks and connect with informal groups, and the technologies can even facilitate access to formal structures of political participation through online policy consultations or town halls. On the other hand, ADTs, and particularly social media, have been shown to foment societal polarization and divisive politics, which may relate to domestic as well as transnational issues, even transposing homeland politics in virulent ways. This panel will discuss the main advantages that ADTs bring to enhancing migrant civic engagement and democratic participation, and it will also explore the risks involved in a world of transnational chatbots and invisible digital surveillance.

Chair: Mireille Paquet, Concordia University

Co-chair: Shiva S. Mohan, Toronto Metropolitan University

Speakers: Yasmeen Abu-Laban, University of Alberta; Ricardo Baeza-Yates, Northeastern University; Ana Beduschi, University of Exeter; Munmun De Choudhury, Georgia Institute of Technology; Anatoliy Gruz, Toronto Metropolitan University

11:15–11:30 AM COFFEE BREAK

**FIRESIDE
CHAT
11:30 AM–
12:30 PM**

Artificial intelligence for the social good

Ebrahim Bagheri leads the conversation with **Mark Daley**, Western University, and **Foutse Khomh**, Polytechnique Montréal

Coordinator: **Radin Hamidi Rad**, Toronto Metropolitan University

As artificial intelligence methods are finding their way into the realm of immigration and migrant integration, it is vital that we address their ethical and legal implications. On the one hand, the use of AI has been reported to have perpetuated discrimination, exacerbated inequalities, violated human rights, disrupted democratic processes, and more. Yet, on the other hand, AI has improved the speed of border processes and visa applications. Drawing from the UNESCO Recommendation on the Ethics of AI, this fireside chat will consider the ethical, moral and legal aspects of the use of AI technology, asking “how can we ensure AI will be deployed responsibly, and in a way that upholds the rights and dignity of migrants everywhere?”

12:30–1:30 PM LUNCH AT OAKHAM HOUSE

SESSION 2

**ROUNDTABLE
1:30–3 PM**

Help or hindrance? What potential do ADTs have to address the inequities of health care in Canada and around the world?

ADTs have revolutionized health care over the past two decades. Their implications have moved beyond computerized billing and accounting to innovations in many aspects of care delivery. Sophisticated devices are bringing services to remote areas, enhancing real-time diagnosis and treatment and enabling drone-delivery of medical supplies. At the same time, advances in AI are leading to dramatic improvements in disease identification and more precise views of population health. While technological progress promises to improve quality of life, there are concerns about the actual effectiveness of ADTs and their ethical use, particularly whether they lead to positive outcomes for all. This panel will discuss the necessary conditions for turning ADTs into a support for equitable access to health care and for promoting migrant well-being.

Chair: **Josephine Wong**, Toronto Metropolitan University

Co-chair: **Georgiana Mathurin**, Toronto Metropolitan University

Speakers: **Marla Asis**, Scalabrini Migration Centre; **Andre Renzaho**, Western Sydney University; **Elizabeth Saewyc**, University of British Columbia; **Karen Soldatic**, Toronto Metropolitan University

- 3–3:05 PM** **Introduction of discussion tables:** Ashika Niraula, Senior Research Associate, CERC Migration
- 3:05–3:15 PM** **COFFEE BREAK**
- 3:15–4:15 PM** **Breakout discussion tables – Digital inclusion in newcomer integration**
- Participants will join a facilitated small group discussion to exchange ideas from diverse perspectives and experiences. See **page 20** for discussion questions.
- 4:30–5:30 PM** **REFRESHMENTS & LIGHT APPETIZERS**
- 5:30–7 PM** **BUFFET DINNER**

THURSDAY, MAY 9, 2024

- 8:30–9:15 AM** **CONTINENTAL BREAKFAST**

SESSION 3

ROUNDTABLE

9:15–11 AM

Migration and inclusive cities: How can social and technological infrastructure shape the experience of integration?

Well-organized social and technological infrastructure can significantly affect how services are delivered, the organization of workplaces and social networks, and how a community welcomes newcomers. This roundtable, comprised of Canadian and international urban and housing scholars, practitioners, advocates and activists, aims to stimulate debate on how, and more specifically, what social and technological infrastructure impacts newcomers' integration in Canadian cities, with special consideration of the relative deficit found in small urban settings and how it might not only inhibit integration but also detract newcomers from settling in such places.

Chair: Sandeep Agrawal, University of Alberta

Co-chair: Jérémie Molho, Toronto Metropolitan University

Speakers: Cherise Burda, Toronto Metropolitan University; Cathy Yang Liu, Georgia State University; Gil Penalosa, 80 Cities; Geoffrey Rockwell, University of Alberta; Zhixi Zhuang, Toronto Metropolitan University

11–11:30 AM

COFFEE BREAK

**LAB
INNOVATIONS**

**11:30 AM–
12:30 PM**

**eXtended Reality and Digital Twins in migration behaviour studies:
Lessons from Travel Demand Modelling**

The Laboratory of Innovations in Transportation (LiTrans), has pioneered the use of eXtended Reality (XR) and Digital Twins (DT) to understand human travel behaviour when faced with novel and emerging future choices, e.g., automated vehicles. Building upon LiTrans' experience in travel demand modelling, this talk will make a case that XR and DT have the potential to be very useful tools for systematically studying the behaviour, preferences, and decision-making processes of individual migrants. Using the examples of neighbourhood and walking preferences, the talk will explore opportunities, challenges, and limitations associated with these novel tools.

Bilal Farooq, Toronto Metropolitan University

**Grasping Migration: How tangible and embodied media can support
data-driven discovery**

Tangible and embodied interaction approaches can offer powerful opportunities to re-think the way we engage with and construct knowledge in a data-driven world. TMU's Synaesthetic Media Lab has been exploring the design and application of these techniques in diverse fields. This talk will highlight the lab's ongoing research and prototype systems that support collaborative sensemaking around complex datasets, with a view toward how these approaches can be applied in migration research.

Ali Mazalek, Toronto Metropolitan University

Chair: Sophie Yohani, University of Alberta

Coordinator: Radin Hamidi Rad, Toronto Metropolitan University

12:30–12:35 PM **Introduction of discussion tables:** Martha Munezhi, Executive Director, Bridging Divides

12:35–1:30 PM **BUFFET LUNCH**

1:30–2:30 PM Breakout discussion tables – Reflections for the future

Participants will join a facilitated small group discussion to exchange ideas from diverse perspectives and experiences. See **page 22** for discussion questions.

2:30–2:45 PM COFFEE BREAK

SESSION 4

**ROUNDTABLE
2:45–4:15 PM**

What is technology's promise for the future of migrant workers?

Technological advancements have the potential to revolutionize newcomers' labour market outcomes by offering innovative solutions to the challenges they face. From AI-driven job-matching platforms to virtual skill-development initiatives, technology not only facilitates smoother integration but also addresses the evolving demands of the future workforce. The impact of technology on the future of work is palpable, with automation, artificial intelligence and digitization already influencing job structures and skill requirements. For migrant workers, adapting to these technological shifts is becoming crucial for navigating the Canadian labour market. This panel will examine the ethical considerations, potential biases, and the digital divide, asking whether the promises of technology in the future of work will materialize equitably for all participants including migrant workers.

Chair: Rupa Banerjee, Toronto Metropolitan University

Co-chair: Nick Dreher, Toronto Metropolitan University

Speakers: Wendy Cukier, Toronto Metropolitan University; Jean-Christophe Dumont, Organisation for Economic Co-operation and Development; Suzanne Huot, University of British Columbia; Shamira Madhany, World Education Services; Joel Martin, National Research Council Canada

4:15–4:30 PM CONCLUDING REMARKS

Anna Triandafyllidou

BIOGRAPHIES

SESSION 1: ROUNDTABLE

Who belongs? How do ADTs impact migration, citizenship and democracy?



Chair: Mireille Paquet, Concordia University

Mireille Paquet holds the Concordia University Research Chair on the Politics of Immigration, is the Scientific Director of the Équipe de recherche sur l'immigration au Québec et ailleurs and is the Concordia University Institutional Lead for Bridging Divides. She has held multiple fellowships at Harvard University; the University of California, Berkeley; Institut Convergences Migrations at the Collège de France and CERC Migration. She has received a Concordia University Research Award in Social Sciences. Mireille is directly involved in public policy, acting as a consultant and advisor for different government departments and non-governmental organizations.



Co-Chair: Shiva S. Mohan, Toronto Metropolitan University

Shiva S. Mohan is Research Fellow, CERC Migration. He is a human geographer with research interests situated at the interface of migration and mobility studies, island studies and political geography. Shiva's doctoral dissertation focussed on Venezuelan displacement to Trinidad and Tobago, interrogating the island-nation's responses to the in-flow of migrants. He is Research Associate at the International Migration Research Centre, Balsillie School of International Affairs, Wilfrid Laurier University and at the Environmental Mobility Research Unit. He is a member of the Migration and Development Research Cluster at the Sir Arthur Lewis Institute of Social and Economic Studies, The University of the West Indies.



Yasmeen Abu-Laban, University of Alberta

Yasmeen Abu-Laban is Professor and Canada Research Chair in the Politics of Citizenship and Human Rights in the Department of Political Science at the University of Alberta, Fellow at the Canadian Institute for Advanced Research and a researcher with the Bridging Divides program. She has published widely on themes relating to immigration and border control policies, anti-racism and multiculturalism and citizenship theory. She was elected President of the Canadian Ethnic Studies Association in 2022 and has also served as President of the Canadian Political Science Association and Vice President of the International Political Science Association.



Ricardo Baeza-Yates, Northeastern University

Ricardo Baeza-Yates research interests include algorithms and data structures, information retrieval, web search and data mining, and data science and visualization. He is Director of Research at the Institute for Experiential AI of Northeastern University. He is also a part-time Professor at Universitat Pompeu Fabra in Barcelona and Universidad de Chile in Santiago. Before he was the CTO of NTENT, a semantic search technology company based in California and prior to these roles, he was VP of Research at Yahoo Labs, based in Barcelona, Spain, and later in Sunnyvale, California, from 2006 to 2016.



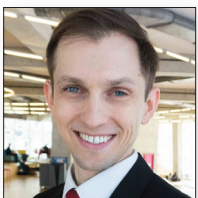
Ana Beduschi, University of Exeter

Ana Beduschi is Full Professor of Law at the University of Exeter, where she specializes in international human rights law, technology, international migration and refugee law. She is the Director of the Research Centre for Science, Culture and the Law at the University of Exeter Law School. Ana has held Visiting Research Fellowships at the Max Planck Institute for Comparative Public Law and International Law and at the Geneva Academy of International Humanitarian Law and Human Rights, University of Geneva. She earned her PhD in Law from the University of Montpellier in 2011. She was admitted to the Bar as an Attorney-at-Law in São Paulo, Brazil, in 2001.



Munmun De Choudhury, Georgia Institute of Technology

Munmun De Choudhury is Associate Professor of Interactive Computing at the Georgia Institute of Technology. She is best known for developing computational techniques to responsibly and ethically use social media to understand and improve mental health. Munmun has been recognized with multiple awards, including the 2021 ACM-W Rising Star Award. She was Faculty Associate with the Berkman Klein Center for Internet and Society at Harvard University and Postdoc at Microsoft Research. She obtained her PhD in Computer Science from Arizona State University.



Anatoliy Gruzd, Toronto Metropolitan University

Anatoliy Gruzd is Professor of Information Technology Management and holds the Canada Research Chair in Privacy-Preserving Digital Technologies at the Ted Rogers School of Management, Toronto Metropolitan University. He is also Director of Research at the Social Media Lab, Toronto Metropolitan University, and a researcher with the Bridging Divides program. Anatoliy's various research initiatives focus on studying the impact of social media platforms on communication, collaboration and information dissemination as well as on the formation of communities online and how these changes affect society.

SESSION 1: FIRESIDE CHAT

Artificial intelligence for the social good



Ebrahim Bagheri, Toronto Metropolitan University

Ebrahim Bagheri is a professor in the Department of Electrical, Computer and Biomedical Engineering at TMU, where he holds a Canada Research Chair in Social Information Retrieval and an NSERC Industrial Research Chair in Social Media Analytics. He is the Director of the NSERC CREATE program on the Responsible Development of AI (RAI) and the Scientific Co-Director of the Bridging Divides program. Ebrahim is a truly interdisciplinary researcher who has impacted industry, government and civil society through knowledge translation and community engagement. He received a NSERC Synergy Award in recognition of his contributions to knowledge transfer.



Coordinator: Radin Hamidi Rad, Toronto Metropolitan University

Radin Hamidi Rad is currently pursuing his PhD in computer engineering at Toronto Metropolitan University. His main research interests are artificial intelligence, information retrieval and graph analysis. As a software and data specialist, he performs data analysis, reports on research analysis findings and provides technical solutions to research staff to aid in their research. Radin also provides guidance and recommendations on best practices from a data privacy and security lens to Bridging Divides research staff.



Mark Daley, Western University

Mark Daley is the Chief AI Officer at Western University and a full professor in the Department of Computer Science with cross-appointments in five other departments, the Rotman Institute of Philosophy, and the Western Institute for Neuroscience. He is also a faculty affiliate of Toronto's Vector Institute for Artificial Intelligence. Mark has previously served as the Vice-President (Research) at the Canadian Institute for Advanced Research (CIFAR), and Chief Digital Information Officer, Special Advisor to the President, and Associate Vice-President (Research) at Western. Mark is the past chair of Compute Ontario and serves on a number of other boards.



Foutse Khomh, Polytechnique Montréal

Foutse Khomh is a Full Professor of Software Engineering at Polytechnique Montréal, a Canada CIFAR AI Chair on Trustworthy Machine Learning Software Systems, an NSERC Arthur B. McDonald Fellow, and an FRQ-IVADO Research Chair on Software Quality Assurance for Machine Learning Applications. He received a PhD in Software Engineering from the University of Montreal in 2011, with the Award of Excellence. He also received a CS-Can/Info-Can Outstanding Young Computer Science Researcher Prize for 2019. His research interests include software maintenance and evolution, machine learning systems engineering, cloud engineering, and dependable and trustworthy ML/AI.

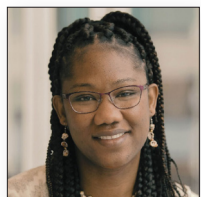
SESSION 2: ROUNDTABLE

Help or hindrance? What potential do ADTs have to address the inequities of health care in Canada and around the world?



Chair: Josephine Wong, Toronto Metropolitan University

Josephine Wong is Professor and Research Chair in Urban Health at the Daphne Cockwell School of Nursing at TMU and a researcher for Bridging Divides. She has extensive experience in critical public health and urban health, including the development of access and equity policies and inclusive frameworks for public health practice. She works closely with racialized, immigrant and refugee communities to co-develop innovative solutions that promote health equity and positive social change. Underpinned by the principles of social justice and equity, Josephine's research focuses on gender identities and health practices, social determinants of mental health and HIV/STBI vulnerabilities in diasporic and transnational communities. She leads intervention studies on stigma reduction and collective resilience in the Asian, Black and Latinx communities in Canada and China.



Co-Chair: Georgiana Mathurin, Toronto Metropolitan University

Georgiana Mathurin is a PhD student and a researcher at CERC Migration. She holds MAs in Immigration and Settlement Studies and Early Childhood Studies, both from TMU. She is a contract lecturer at the School of Early Childhood, George Brown College. In 2023, Georgiana was awarded the Viola Desmond Award for her exemplary role as a leader in the Black community at TMU and beyond.



Marla Asis, Scalabrini Migration Center

Maruja Milagros B. (Marla) Asis is Director of the Scalabrini Migration Center and Editor of the *Asian and Pacific Migration Journal*. She is a sociologist with more than 30 years of research experience in international migration and social transformation, with a special focus on the Asian region. Her research and publications explore the themes of gender, family and migration, migration and development and migration governance. Marla has extensive experience working on transnational research projects and is actively involved in various consultative bodies on international migration.



Andre Renzaho, Western Sydney University

Andre Renzaho is a public health researcher specializing in global migration, health equity and cultural competence in health care. He is the inaugural Professor of Humanitarian and Development Studies at Western Sydney University. He has published extensively, and his role as a leading researcher in global migration health has been recognized by multiple awards and mentions, including in the Stanford/Elsevier's Top 2% Scientist Rankings. Prior to academia, he held senior positions and leadership roles with the United Nations High Commission for Refugees, the United Nations Children's Fund, Concern Worldwide, Care Australia, Médecins Sans Frontières and World Vision International.



Elizabeth Saewyc, University of British Columbia

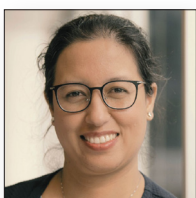
Elizabeth Saewyc is Professor and Distinguished University Scholar and Director of the School of Nursing at the University of British Columbia in Vancouver. She founded and heads the Stigma and Resilience Among Vulnerable Youth Centre and is a researcher with Bridging Divides. For over 25 years, Elizabeth's research has focused on different groups of marginalized youth, emphasizing how stigma, violence and trauma affect adolescent health and risk behaviours as well as the protective factors that foster resilience among these vulnerable populations. Elizabeth is Fellow with the Society for Adolescent Health and Medicine, the Canadian Academy of Health Sciences, the American Academy of Nursing and the Canadian Academy of Nursing, and she was inducted into the Sigma Theta Tau International Nursing Researcher Hall of Fame.



Karen Soldatic, Toronto Metropolitan University

Karen Soldatic is the Canada Excellence Research Chair in Health Equity and Community Wellbeing at Toronto Metropolitan University. She is a leading international scholar of disability, marginality and global inequality. Her research uses a broad lens to explore how social, cultural and political factors influence health and community well-being. Joining TMU from Western Sydney University, Karen has extensive expertise in collaborating directly with marginalized communities that experience poor health outcomes due to intensive social, emotional, cultural and economic inequality. Her unique empirical work has bridged numerous divides and helped diverse communities gain more equitable access to disability, health and social service institutions across Australia, South Asia and South-East Asia.

DISCUSSION TABLES



Chair: Ashika Niraula, Toronto Metropolitan University

Ashika Niraula, Senior Research Associate, CERC Migration, has interdisciplinary experience as a researcher and development practitioner, with research interests in global migration flows, decision-making processes related to migration and the experiences of migrant integration and settlement. She focuses on topics, such as drivers of migration, migrant agency, labour market transitions, deskilling, health inequalities, migrant well-being, migrant networks and legal and social disparities in host countries, such as Canada and Denmark.



Chair: Martha Munezhi, Toronto Metropolitan University

Martha Munezhi is the Executive Director of Bridging Divides. An accomplished researcher and administrator, she joined TMU from Queen's University, where she served as Assistant Director, Research Promotion and Initiatives and Interim Associate Dean, Research at Smith School of Business. She holds a PhD in sociology from the University of Utah, where she researched migration integration with a focus on population and health as a Fulbright Scholar.

SESSION 3: ROUNDTABLE

Migration and inclusive cities: How can social and technological infrastructure shape the experience of integration?



Chair: Sandeep Agrawal, University of Alberta

Sandeep Agrawal is Associate Dean in the Faculty of Graduate Studies and Research and Professor in the Department of Earth and Atmospheric Sciences, University of Alberta, where he established and was inaugural Director of the School of Urban and Regional Planning. He is also a researcher and Institutional Lead for Bridging Divides. An accomplished author of three books and more than 100 articles and reports, Sandeep has made significant contributions to urban planning through the lens of multiculturalism, human rights and equity, with notable impacts on city bylaws, planning policies and legislation. Sandeep is a recipient of the Canadian Institute of Planners' national academic award for his significant contribution to planning education and research.



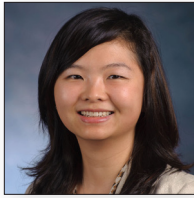
Co-Chair: Jérémie Molho, Toronto Metropolitan University

Jérémie Molho is Senior Research Associate, CERC Migration, an affiliated researcher for Bridging Divides and former Marie Curie Fellow at the National University of Singapore and the European University Institute. His research adopts a comparative urban studies approach. He has conducted fieldwork in emerging global cities such as Istanbul, Doha and Singapore and has developed an interest in visual and video-based research methods. Jérémie's current research compares the urban policies and politics of attraction and retention of migrants with complex trajectories spanning across Asia, the Middle East and Canada.



Cherise Burda, Toronto Metropolitan University

As Executive Director of City Building, TMU, Cherise Burda leads collaborations and knowledge mobilization strategies for academic research in city building and urban innovation and policy research on issues of sustainable regional planning and development, housing affordability, placemaking and transportation. Her previous roles included Ontario Director of the Pembina Institute, Program Director with the David Suzuki Foundation in Vancouver and Senior Researcher with University of Victoria's Eco-Research Chair of Environmental Law and Policy. Her work as a spokesperson, advisor and author of over 40 policy reports, book chapters, academic publications and articles has directly influenced policy change in Ontario and British Columbia.



Cathy Yang Liu, Georgia State University

Cathy Yang Liu is Professor and Department Chair of Public Management and Policy and Michael and Enid Mescon Endowed Chair at the Andrew Young School of Policy Studies, Georgia State University. She conducts research and publishes widely on topics related to community and economic development, urban policy, migration and the labor market as well as entrepreneurship and the creative economy in both the United States and international contexts. Her research has been supported by the Ewing Marion Kauffman Foundation, the Lincoln Institute of Land Policy and others.



Gil Penalosa, 8 80 Cities

Gil Penalosa is Founder and Chair of the Canadian non-profit organization 8 80 Cities and Founder of Cities for Everyone. He is Academic Chair at the Norman Foster Institute as well as Expert Advisor to the International Society for Urban Health. He was twice elected as Chair of World Urban Parks. Gil holds an MBA from the University of California, Los Angeles, Anderson School of Management and received a Doctorate Honoris Causa from the Faculty of Urban Planning at Swedish University of Agricultural Sciences. In 2023, Gil was selected by Identity Review as one of its 15 Thought Leaders in Sustainable City Development and ranked 13 in Planetizen's Top 100 Most Influential Contemporary Urbanists.



Geoffrey Rockwell, University of Alberta

Geoffrey Rockwell is Professor of Philosophy and Digital Humanities at the University of Alberta, a Canada CIFAR AI Chair at Alberta Machine Intelligence Institute, and a researcher for Bridging Divides.. He studies video games, textual visualization, text analysis, ethics of technology and the ethics of artificial intelligence. He is the author of books and articles on sustainable research practices and human-computer interaction. With Stéfan Sinclair, Geoffrey co-developed Voyant Tools, an award-winning suite of text analysis and visualization tools. He is currently working on a book on dialogue and artificial intelligence that looks at the conversations we have about AI and the conversations we can have with the new chatbots like ChatGPT.



Zhixi Zhuang, Toronto Metropolitan University

Zhixi Zhuang is a Registered Professional Planner and Associate Professor at the School of Urban and Regional Planning, TMU, and a researcher for Bridging Divides. As the academic director of the Toronto Metropolitan Centre for Immigration and Settlement and Founder and Director of DiverCityLab, her research explores growing urban diversity in Canadian cities and how city builders can instill the values of equity and inclusion into policies and practices. Specifically, she investigates the intersections of individual characteristics, their impacts on lived experiences in cities and how diversity and differences shape places and communities. Her mixed-methods and arts-informed research aims to impart a holistic perspective on immigrant integration, placemaking, civic engagement and inclusive policymaking.

SESSION 3: LAB INNOVATIONS



Chair: Sophie Yohani, University of Alberta

Sophie Yohani is a professor in the Faculty of Education at the University of Alberta. She is a registered psychologist with a background in counselling psychology, global mental health, and elementary education. Her research examines migrants' mental health, psychosocial adaptation, and community-engaged mental health practices. She also engages in interdisciplinary research and community psychology programming focused on the well-being of African/Black families and communities in Canada. Sophie is the recipient of the University of Alberta's Killam Annual Professorship (2021) and the Edmonton Mennonite Centre for Newcomers' Lifetime Achievement Award (2016), recognizing the contributions of an immigrant in education and health in Alberta. Sophie's professional affiliations include the College of Alberta Psychologists, Canadian Psychology Association, and the Canadian Register of Health Service Psychologists.



Bilal Farooq, Toronto Metropolitan University

Bilal Farooq is Canada Research Chair in Disruptive Transportation Technologies and Services and Associate Professor at TMU. He is also Founding Director of Laboratory of Innovations in Transportation (LiTrans) and a researcher for Bridging Divides. Always quick to take things apart to see how they work internally, Bilal brings his approach of "learning through curiosity" to his work in traffic flow simulation and prediction, connected autonomous vehicles and urban congestion.



Ali Mazalek, Toronto Metropolitan University

Alexandra (Ali) Mazalek is Professor and Canada Research Chair in Digital Media and Innovation at TMU, founder and director of the Synaesthetic Media Lab (Synlab), TMU and Georgia Institute of Technology, and a researcher for Bridging Divides. Ali works at the forefront of computing and interaction design. Her research interests include the design and application of emerging physical sensing and digital media technologies to areas such as narrative expression, abstract thinking, scientific modeling, as well as the study and use of embodied cognition as a framework for tangible and embodied interaction design.

SESSION 4: ROUNDTABLE

What is technology's promise for the future of migrant workers?



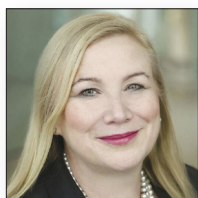
Chair: Rupa Banerjee, Toronto Metropolitan University

Rupa Banerjee is the Canada Research Chair in Economic Inclusion, Employment and Entrepreneurship of Canada's Immigrants and Associate Professor of Human Resource Management and Organizational Behaviour at Toronto Metropolitan University. She is also a researcher in the Bridging Divides program. Her primary research interest lies in the employment integration of new immigrants to Canada, with a focus on the institutional barriers facing new immigrants in the Canadian labour market and issues of workplace diversity and ethno-racial discrimination, particularly as they apply to second-generation immigrants.



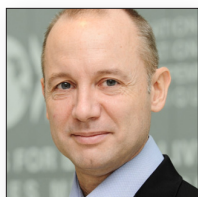
Co-Chair: Nick Dreher, Toronto Metropolitan University

Nick Dreher is a PhD candidate in Policy Studies and Migration at Toronto Metropolitan University. He is also a researcher with CERC Migration and the Soli*City partnership, and an affiliated researcher with Bridging Divides. His dissertation research focuses on how international and local actors collaborate to support the needs of precarious migrants and refugees. He currently serves on the steering committee for the Global (De)Centre network.



Wendy Cukier, Toronto Metropolitan University

Wendy Cukier is Professor of Entrepreneurship and Strategy and Founder and Academic Director of the Diversity Institute at Toronto Metropolitan University, where she leads a team of more than 100 research staff. She is also a researcher for Bridging Divides. Wendy is one of Canada's leading experts in disruptive technologies, innovation processes and diversity and inclusion and has published more than 200 articles exploring various aspects of these themes. She has been recognized for her role in advancing diversity and inclusion with the Meritorious Service Cross, Harry Jerome Diversity Award and other honours and awards.



Jean-Christophe Dumont, Organisation for Economic Co-operation and Development

Jean-Christophe Dumont is Head of the International Migration Division in the Directorate for Employment, Labour and Social Affairs, Organisation for Economic Co-operation and Development (OECD), where he is in charge of the OECD annual flagship publication *International Migration Outlook* and numerous other publications on the economic impact of international migration, migration management and the labour market integration of immigrants and their children in OECD countries. He has also worked on migration and development issues and on the international mobility of health workers. He holds a PhD in development economics from the University Paris IX-Dauphine and has been a research fellow at Laval University, Quebec.



Suzanne Huot, University of British Columbia

Suzanne Huot is Assistant Professor in the Department of Occupational Science and Occupational Therapy at the University of British Columbia and a researcher for Bridging Divides. Her research program centres on immigration, the axes of occupation and Francophone minority communities. Using research approaches informed by occupational science, critical social theory and qualitative methodologies, Suzanne examines ways in which governmental decisions and actions are experienced at the local scale in relation to people's daily occupations, interrogating the effects of these high-level decisions on peoples' integration, belonging and sense of community cohesion. Her ongoing research focuses on equity issues that newcomers confront within contemporary policy contexts as they navigate post-migratory transitions within their host communities.



Shamira Madhany, World Education Services

Shamira Madhany joined World Education Services as Managing Director, Canada, and Deputy Executive Director in 2018, after more than two decades of public service with the Ontario government. She has extensive experience working with licensing bodies, settlement agencies and higher education and post-secondary sectors in Ontario. She served as the chief architect of several government programs that enable highly skilled immigrants to obtain employment in their fields. Shamira played a key role in the launch of World Education Services Canada in 2000 during her tenure at the Ontario Ministry of Citizenship and Immigration.



Joel Martin, National Research Council Canada

Joel Martin is the Chief Digital Research Officer and Chief Science Officer at the National Research Council Canada. He holds a PhD in Computer Science, Machine Learning, from the Georgia Institute of Technology and completed post-doctoral studies at the University of Pittsburgh. He has published dozens of peer-reviewed research articles and taught at the University of Ottawa and Carleton University. He has received awards for exceptional leadership and for innovative approaches to technology transfer. Since joining the National Research Council in 1994, Joel has served in multiple leadership roles in the Digital Technologies Research Centre, including Acting Director General, Senior Director, Director of Research and Development and Program Lead.

About migration research at TMU

Home to one of the country's largest clusters of migration research, partnerships and graduate training, Toronto Metropolitan University is quickly becoming a leading gateway to Canadian and international knowledge and expertise on migration. Two flagship programs now build on the university's long-standing strengths in teaching and scholarship.

Through the program **Migrant Integration in the Mid-21st Century: Bridging Divides**, TMU leads a consortium of three other academic partner institutions – Concordia University, University of Alberta, University of British Columbia – to research the challenges of migrant integration, against the backdrop of rapid social, economic and digital transformation.

The **Canada Excellence Research Chair in Migration and Integration** program provides critical analysis of the drivers of global migration, state responses, and the reception of migrants in destination countries.

Working together and with partners across Canada and around the world, TMU researchers are developing the innovative research, critical analysis, and tools and insights that will lead to a more just and sustainable migration future.



VISIT THE MARKETPLACE

We invite you to visit the booths outside the auditorium to learn about startups that originated at TMU and what some of our TMU research labs are working on.

DEMOS



Laboratory of Innovations in Transportation (LiTrans)

Journey Through Toronto: Exploring Neighbourhood Diversity in Virtual Reality

Immerse yourself in different Toronto neighbourhoods with our innovative VR demo at the Migration Disrupted. Explore features of each location, as we utilize 360-degree images to offer a glimpse into different vibrant communities. Join us as we delve into the complexities of immigrant residential location choice through the lens of VR, unlocking insights into the factors shaping urban migration patterns.

Additionally, you will be able to walk through Front St. West and see Union Station, experiencing the dynamic vibe of urban life in downtown Toronto. Discover how VR serves as a powerful research tool, allowing us to study pedestrian walking behaviour.



Synaesthetic Media Lab (Synlab)

Grasping Migration: Designing Tangible Tabletop Interactions for Exploring Migration Data

Understanding the complexities of migration patterns and their drivers is crucial for researchers and policymakers. We present an early prototype of a tangible and tabletop system for exploratory visualization and interaction with migration data. The demonstration illustrates how interactive tangible objects coupled with a tabletop surface can be used to select, display, and navigate migration data in a specific geographic context. In the long term, the project aims to create innovative analytical tools and frameworks to aid decision makers in developing future migration policies.

STARTUPS



Savyn

Savyn, a groundbreaking startup, is reshaping the landscape of PTSD treatment with its innovative digital platform. Offering three clinically proven interventions—deep breathing exercises, Eye Movement Desensitization and Reprogramming (EMDR), and Written Exposure Therapy (WET)—Savyn prioritizes accessibility by providing these treatments in multiple languages. Already making a tangible impact on the lives of patients and benefiting an additional 40,000 users through its beta version, Savyn is spearheading change in mental health care.

Collaborating with esteemed partners such as refugee organizations, mental health hospitals, pediatric hospitals, and private clinics, Savyn is driving pilot studies and developing sustainable paid product models. With burgeoning partnerships across Canada and a steadfast commitment to transforming PTSD treatment, Savyn stands as a beacon of hope in the digital mental health revolution.



Music Share for Seniors

Music Share for Seniors is a charitable organization dedicated to reducing senior social isolation through individualized music-based programs. The organization connects senior participants with trained Program Facilitators who lead personalized music listening sessions either one-to-one or in small groups. The organization specifically focuses on individuals who are dealing with some form of Dementia, while also supporting residents managing other physical and/or mental ailments that increase their risk of becoming isolated.

During the sessions, senior participants enjoy music playlists that are catered to their personal histories and preferences, in an effort to elicit moments of lucidity, and reconnect them with positive memories associated with familiar music. The program is designed to be accessible to seniors who are unable to participate in currently available programs due to physical and/or cognitive deficits, and encourages ongoing participation by providing consistent social interaction, and familiar music that holds personal significance.

Day 1 Breakout Discussion: Digital Inclusion in Newcomer Integration
Wednesday, May 8, 2024
3:15–4:15 PM

Participants will join a facilitated table discussion to exchange ideas from diverse perspectives and experiences. Find your discussion table number on the back of your conference name badge and join your discussion table.

Goal: share ideas on how to strengthen digital inclusion in newcomer integration processes

Background

Digital tools, such as websites, mobile applications, social media, are facilitating newcomer integration by providing access to essential settlement information and services. However, the **digital divide** is growing (unequal access to technology, lack of digital skills, gaps in quality of use), in particular affecting marginalized groups of migrants and refugees.

Digital inclusion is when all newcomers have the ability to access, utilize and navigate digital tools, platforms, and services effectively. It extends beyond just the physical access to the internet and devices, and also encompasses the skills, knowledge, and opportunities that newcomers need to fully participate in the digital world.

Discussion Questions

Considering the proliferation of digital tools and the challenge of bridging the digital divide in newcomer integration:

1. What are some **strategies** to promote or improve digital inclusion, which can empower marginalized groups of newcomers to fully utilize digital tools for their integration needs?
2. Which **stakeholders** need to be involved in supporting and promoting digital inclusion?

Discussion table chairs: CERC Migration researchers, Ashika Niraula, Amin Moghadam, Stein Monteiro and Richa Shivakoti

This image shows a single sheet of white paper with horizontal ruling lines. The lines are evenly spaced and run across the width of the page. There are no margins, text, or other markings on the paper.

Day 2 Breakout Discussion: Reflections for the Future
Thursday, May 9, 2024
1:30–2:30 PM

Participants will join a facilitated table discussion to exchange ideas from diverse perspectives and experiences. Find your discussion table number on the back of your conference name badge and join your discussion table.

Goal: Share learning takeaways from the conference and explore directions for future research and learning exchanges

Discussion Questions

In reflection of the past few days of plenaries and discussions, alongside your own perspectives, on how technological transformations are shaping the experience of migrant integration:

1. What do you see as the **biggest advantage and/or challenge** that new technological transformations will bring to the future of migration and integration?
2. What are some **further research questions or areas of research** that can be developed on how new technologies can impact the immigration landscape positively?

This image shows a single sheet of white paper with horizontal ruling lines. The lines are evenly spaced and run across the width of the page. There are no margins, text, or other markings on the paper.

An aerial photograph of the Toronto skyline at sunset. The city is densely packed with skyscrapers and buildings. The CN Tower stands out prominently in the center. The sky is a mix of orange, pink, and blue, reflecting off the water in the background. The overall scene is vibrant and captures the essence of a major city at dusk.

Thank you for joining us in Toronto for Migration Disrupted

Session recordings will be available on
YouTube after the conference





Canada Excellence
Research Chair in
Migration & Integration



www.torontomu.ca/cerc-migration

www.torontomu.ca/bridging-divides